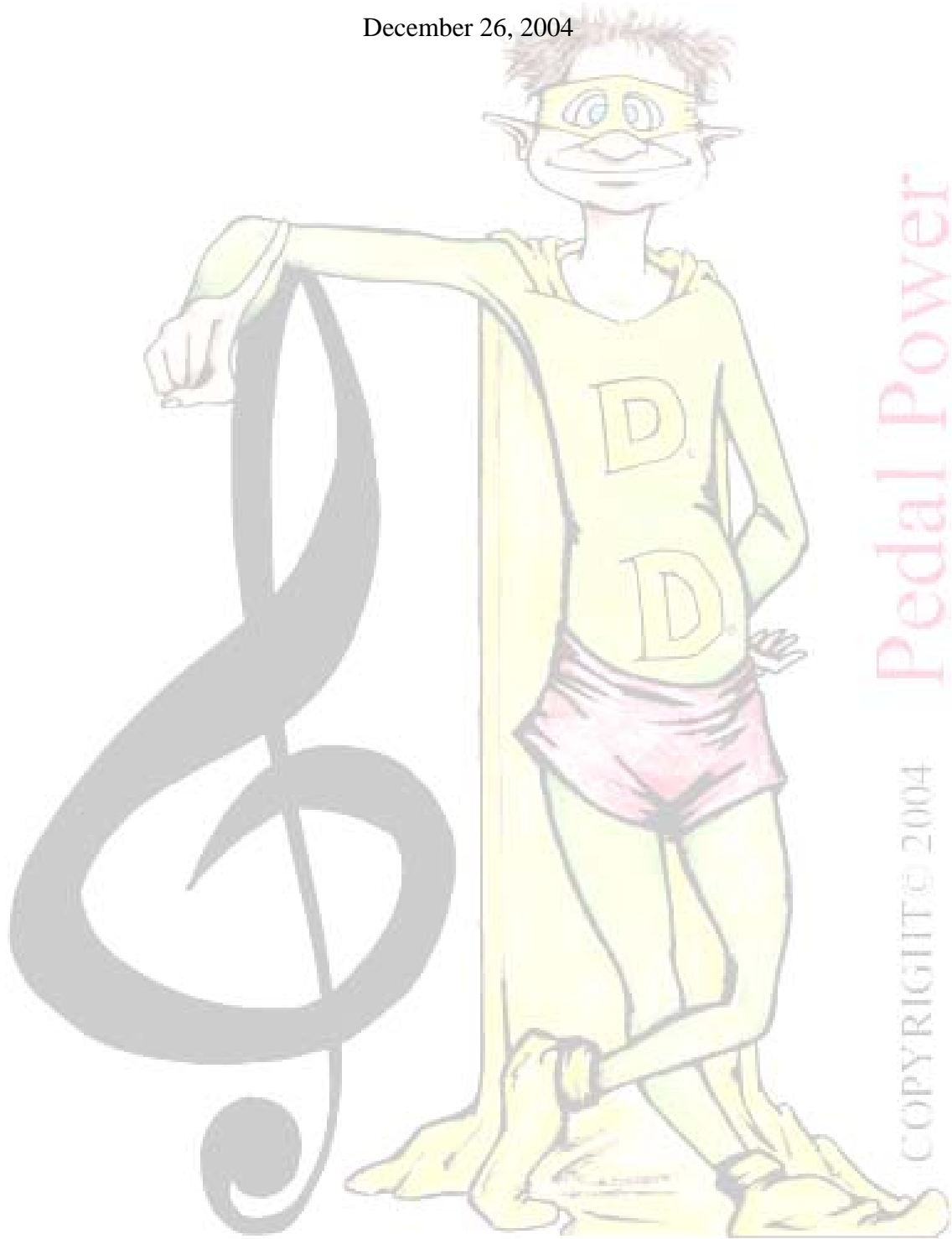


PedalPower Owners Manual

December 26, 2004



Pedal Power

COPYRIGHT © 2004

Summary of its features: “Dapper Dan’s music with color”

This is a work tool for 10 string E9th pedal steel guitar players.

It is a tool for finding two, three and four or more note chords and their inversions.

It is not a teaching tool as I am not a music teacher or professional musician.

This 10 string E9th Pedal Power software was written as a method to finding all chords and their inversions, then let the color and Dapper Software help keep track of all those pedal and lever combinations.

- 1) With this program you can quickly locate chord patterns, inversions and scales.
 - 2) Select the notes you want to locate with or without octave applied.
 - 3) Locate note patterns and chord shapes on the fret board.
 - 4) At a glance see where all the notes are located for a given scale.
 - 5) Work out a new piece of sheet music.
 - 6) Highlight a fret or string to work with.
 - 7) See notes change on the fret board when the respective pedal and/or lever is applied.
 - 8) Work with up to 4 floor pedals and 5 knee lever at one time.
 - 9) Experiment with different tunings and pedal pulls before changing your guitar.
 - 10) Unlimited note configuration with 7 note range with sharps.
 - 11) 3 half step plus or minus for each pedal and lever pull. (Most steels only use 1 or 2 half step changes).
 - 12) Print out of your work.
 - 13) Export your work to an excel spread sheet.
 - 14) Changeable 10 string settings to work with E9th or limited C6th tuning, or for that matter any slide bar tuning you may want to experiment with.
- *) Great for working out Dobro and Banjo licks.
- *) Chords and their inversions are the basic building blocks of music, if you can’t find them then you can’t pick em.

Limited to 4 pedals on the C6th: Please use the X5 Lever for C6th set up.

This software is limited with the C6th, only because the C6th now requires 5 floor pedals and one Knee Lever for a full complement of pedals and levers. You can still do all the moves for the C6th but you will have to work with pedal groups. This means you have to be a little creative when working on the C6th. Please use the X5 Lever when working with C6th tuning due to the way the software searches for chords ect.

5X lever:

This is your vertical knee lever, some have suggested it be called the **J** letter in memory of Jeff Newman. Jeff was instrumental in this lever being added to the pedal steel. He called it the X lever and that’s the reason its called the X lever here, because that’s what Jeff said it was!

A Special Thank You to Nelson:

Thank you to my son Nelson, he made this little program for me and it was his drive and determination that made this program possible.

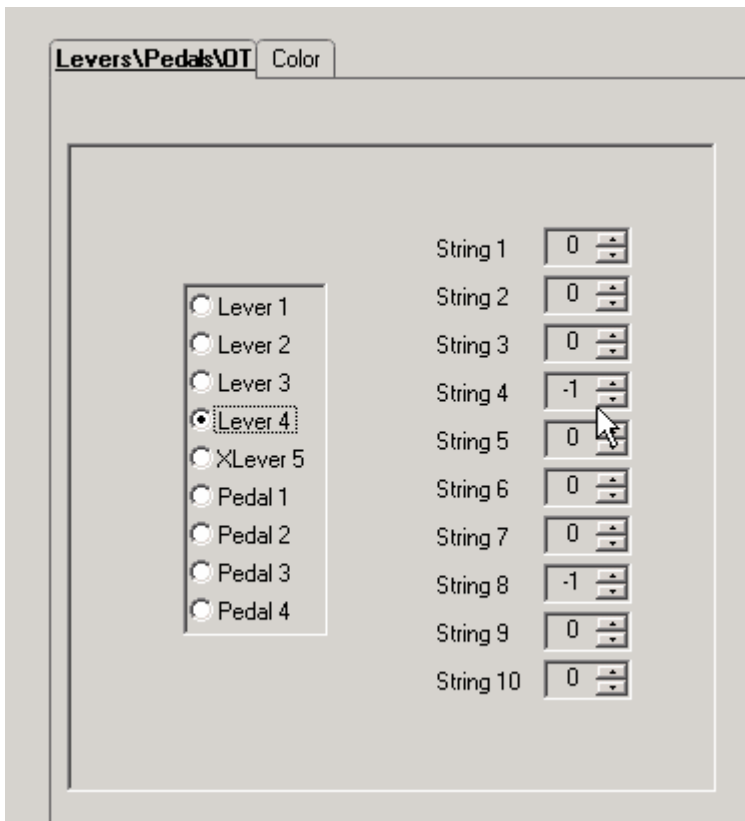
String	Open Tuning	Octave
String 1	F#	4
String 2	E	4
String 3	F#	4
String 4	G	4
String 5	A	3
String 6	B	3
String 7	F#	3
String 8	E	3
String 9	D	3
String 10	B	2

Configuration set up page: “Please save your changes after each change”.

- 1) This is where you select each string note for your open tuning and set up the pulls for the knee lever and floor pedals of your guitar.
- 2) Set the octave for each string.
- 3) Select the color to be displayed for notes.
- 4) Select the color to be displayed for pedals and levers when applied.

Set the open tuning for your guitar under “OPEN TUNNING”. Use the drop down list to select the note name and octave for each string. Example on the E9th 10 string the first string is tuned to F# with an octave of 4. You would use the drop down and select F# and with the up down arrows set the octave to 4. “If you have something else on your guitar then put in what you have for your first string open tuning and so on”.

Tip: If you want to work with string groups and the chords ect. you can find on them then only set the pedal and lever pulls for those strings you wish to work with.



Set up your pedal and lever pulls in the same manner. Select each lever and pedal one at a time and set the strings that each one pulls to the number of frets that it pulls either plus or minus. In the above example lever 4 lowers string 4 and 8 one fret or ½ tone as some would say so it is set to a minus 1 (lowers the E's).

When finished with this setup click save and then OK. You will then be ready to search for notes you want to locate on your guitar.

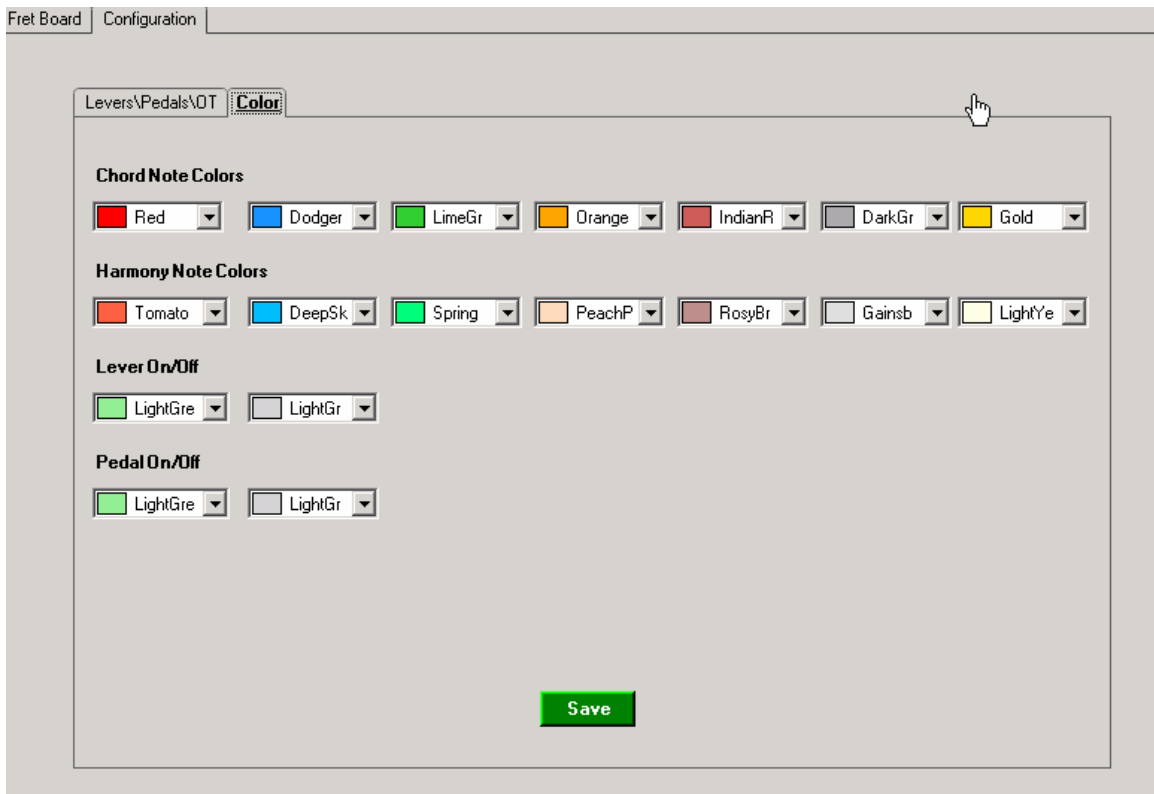
Note that the string closest to you when sitting at your guitar is called string 10. It may help to think of this software view as looking down on the top of your guitar while sitting or standing behind it.

X5 Lever note: Software is for the left knee Applied X (vertical) levers only.

Note that the X5 lever is searched for assuming you can apply the X5 lever and either Lever1 or Lever2 (LKL and LKR) at the same time. Example you may find a chord shape that requires you apply X5, L1 or X5,L2 at the same time. **If you can not do this on your guitar or if you do not have the X lever then set the X Lever pull set to a (0) zero string change.**

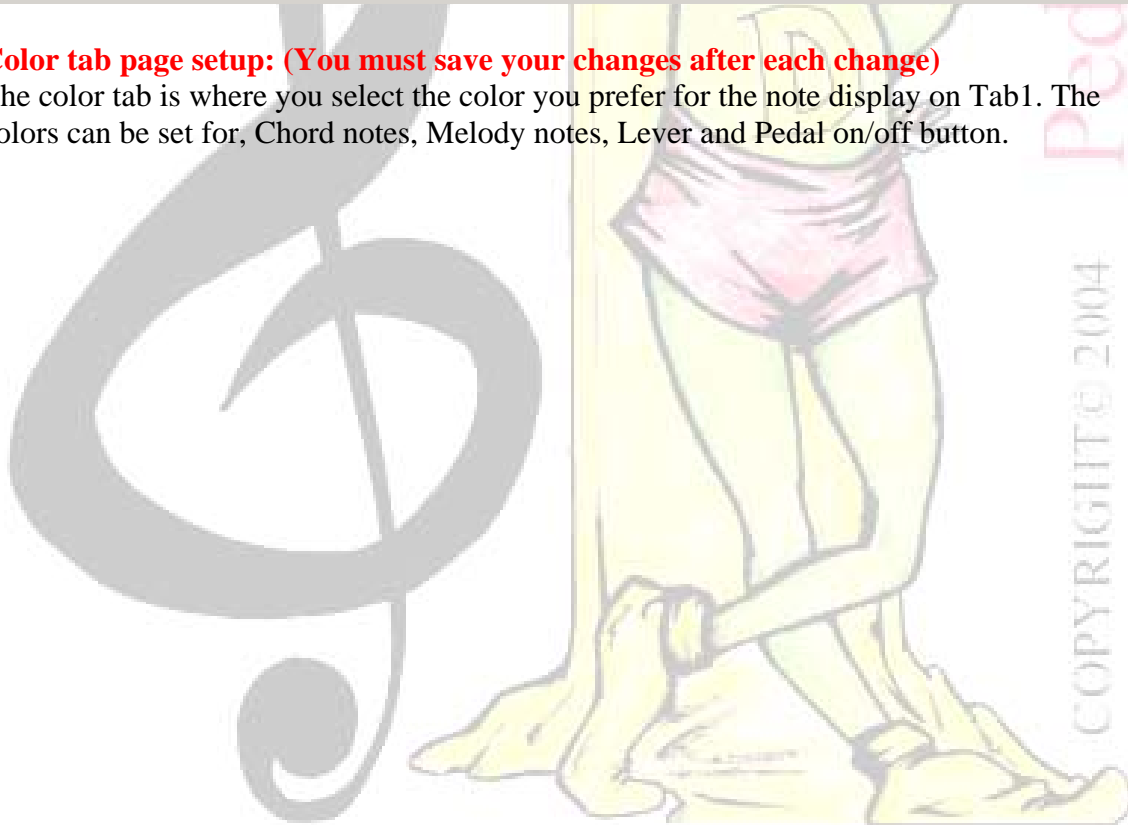
About the search of this software:

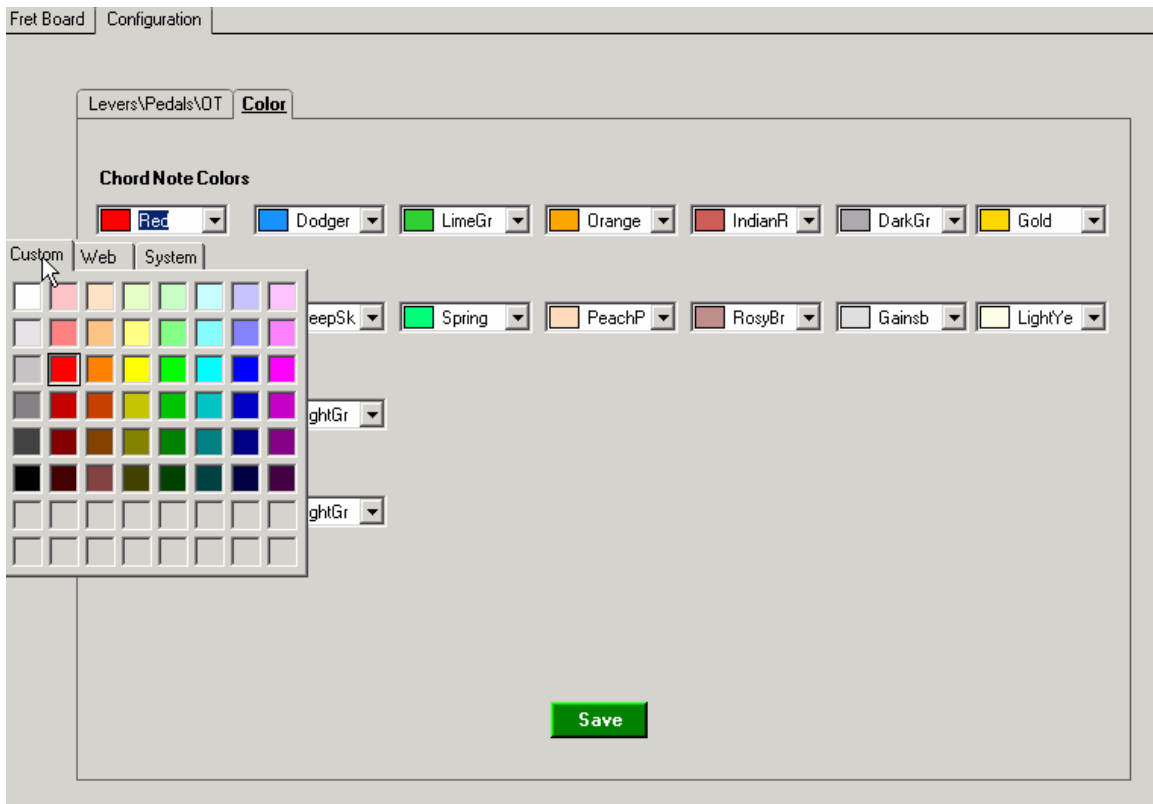
The search is preformed with a logic that says I can physically apply these pedals and levers all at one time. It will not search for things that are physically impossible.



Color tab page setup: (You must save your changes after each change)

The color tab is where you select the color you prefer for the note display on Tab1. The colors can be set for, Chord notes, Melody notes, Lever and Pedal on/off button.





Color tab:

There are three color application to pick from.



Fret Board Configuration

Tab 1 Tab 2 Print Fret Tablature

	Open	1	2	3	4	5	6	7	8	9	10	11	1
1		G											
2		E											
3													
4													
5		C							G				
6									E				
7													
8									C				
9													
10		C											

Chord/Scale/Octave

1 C E G [] [] [] [] [] [] [] R

1 [] [] [] [] [] [] [] [] [] R

Chord
 Scale/Melody
 Show Octave

L1 L2 L3 L4 X5

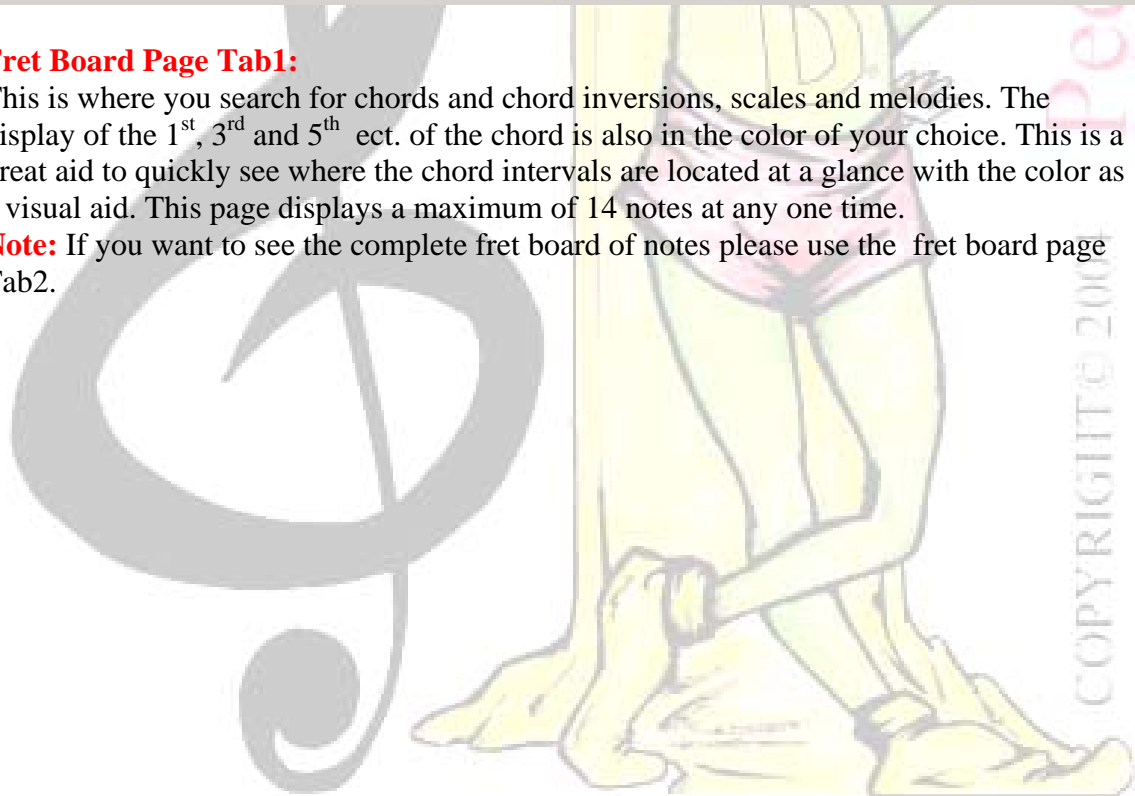
P1 P2 P3 P4

Show Me
Help me

Fret Board Page Tab1:

This is where you search for chords and chord inversions, scales and melodies. The display of the 1st, 3rd and 5th ect. of the chord is also in the color of your choice. This is a great aid to quickly see where the chord intervals are located at a glance with the color as a visual aid. This page displays a maximum of 14 notes at any one time.

Note: If you want to see the complete fret board of notes please use the fret board page Tab2.



Fret Board Configuration

Tab 1 Tab 2 Print Fret Tablature

	Open	1	2	3	4	5	6	7	8	9	10	11	12
1		G											
2		E											
3													
4													
5		C							G				
6									E				
7													
8									C				
9													
10		C											

Chord/Scale/Octave

1 C E G [] [] [] [] R

1 [] [] [] [] [] [] [] [] R

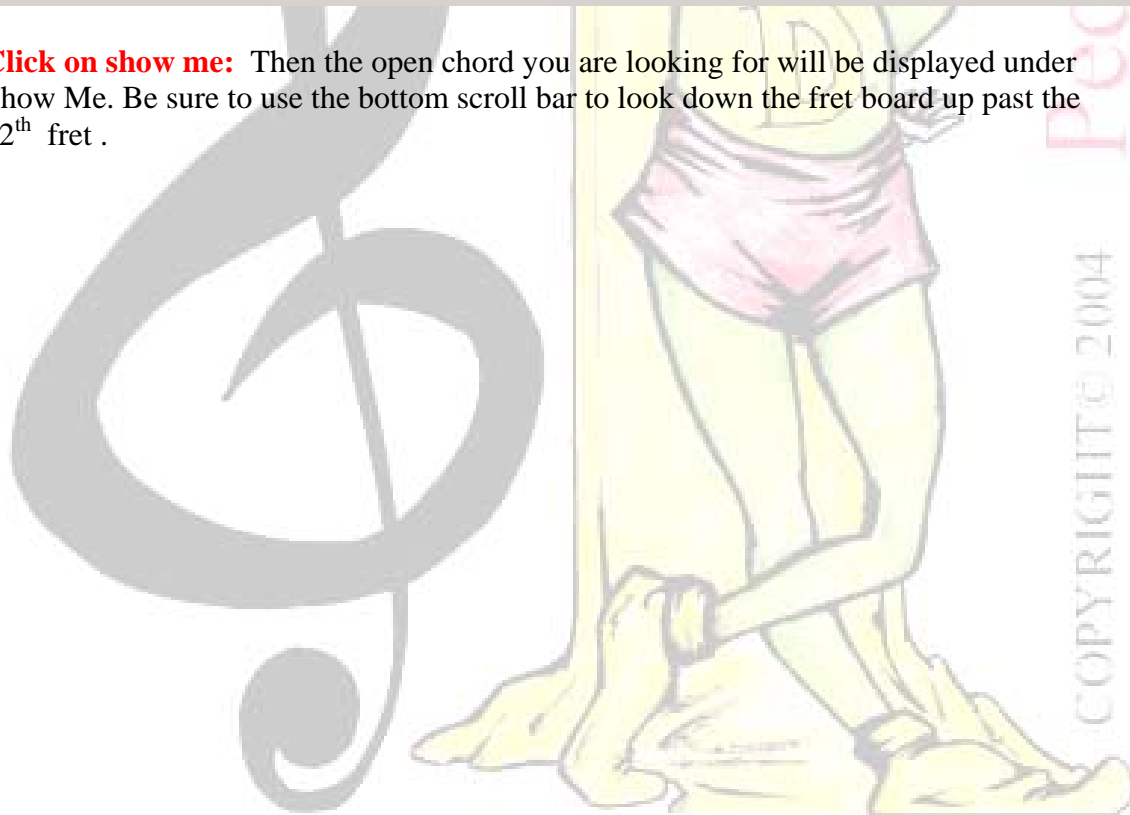
L1 L2 L3 L4 X5

P1 P2 P3 P4

Chord Scale/Melody Show Octave

Show Me Help me

Click on show me: Then the open chord you are looking for will be displayed under Show Me. Be sure to use the bottom scroll bar to look down the fret board up past the 12th fret .



Fret Board Configuration

Tab 1 Tab 2 Print Fret Tablature

	Open	1	2	3	4	5	6	7	8	9	10	11	1
1													
2													
3													
4									C				
5									G				
6									E				
7													
8									C				
9													
10													

Chord/Scale/Octave

1 C E G C [red] [blue] [green] [orange] [red] [grey] [yellow] R

1 [red] [blue] [green] [orange] [red] [grey] [yellow] R

Chord
 Scale/Melody
 Show Octave

L1 L2 L3 L4 X5

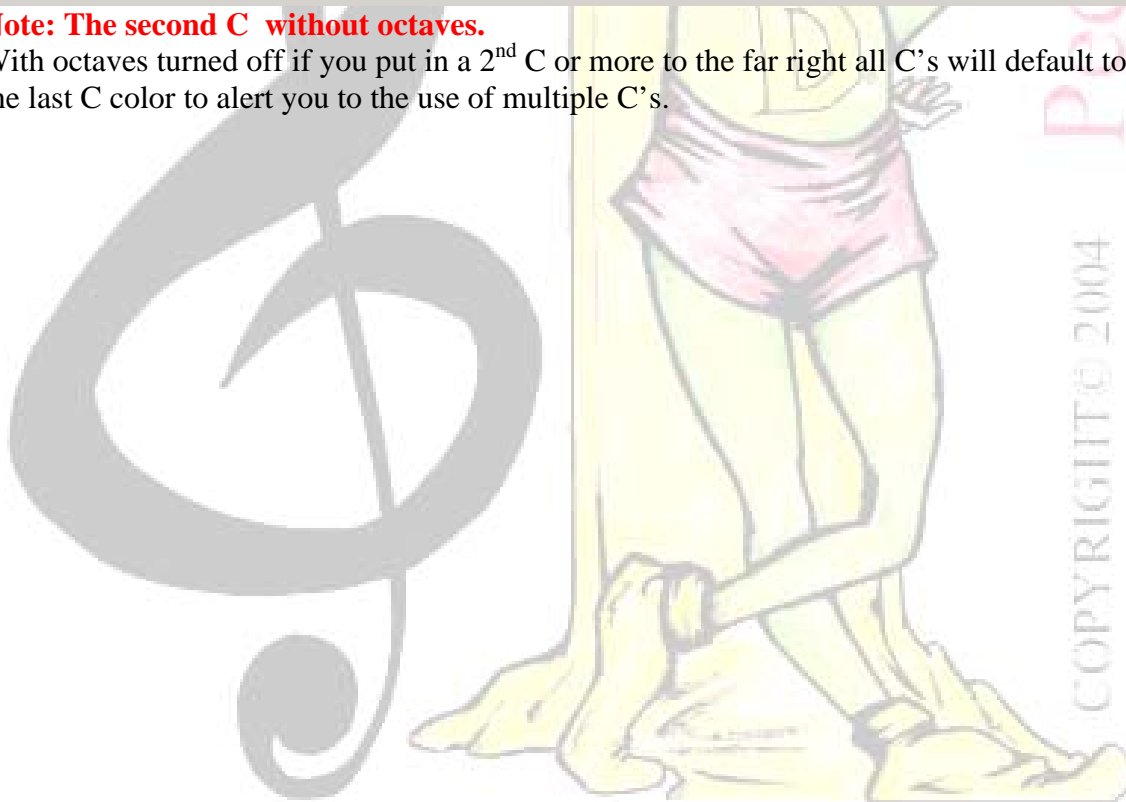
P1 P2 P3 P4

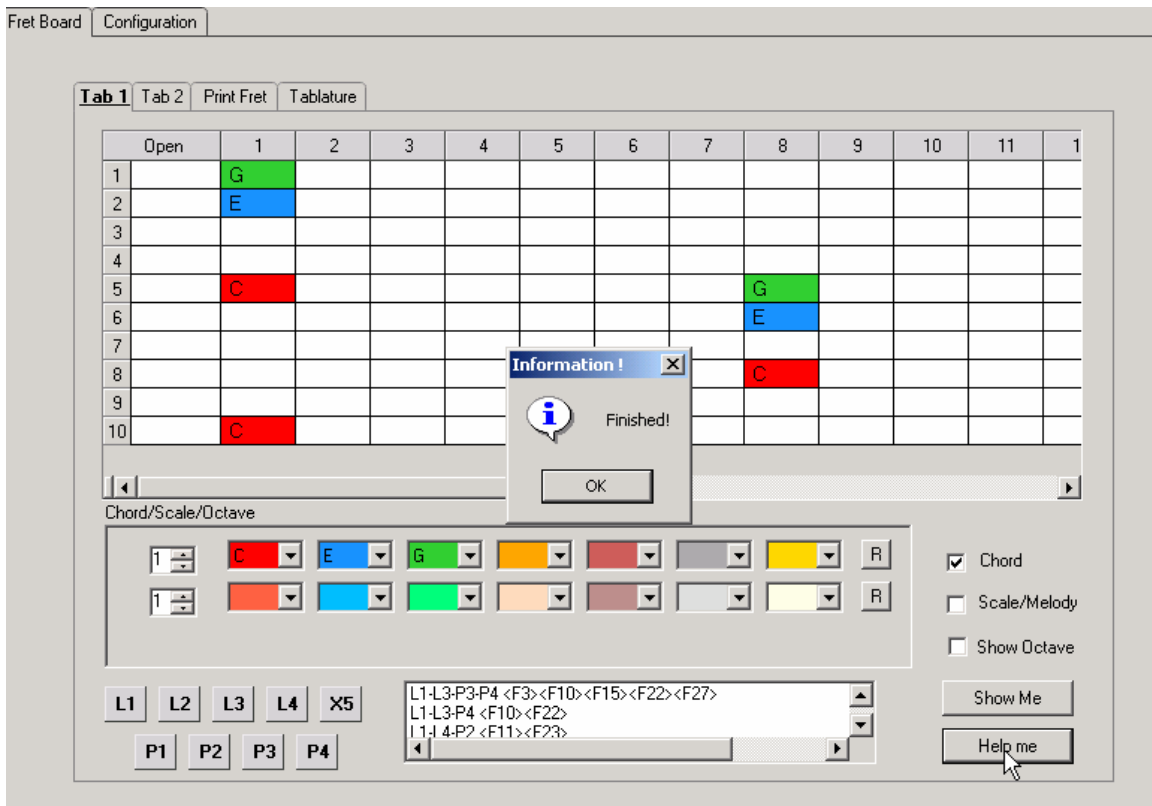
Show Me

Help me

Note: The second C without octaves.

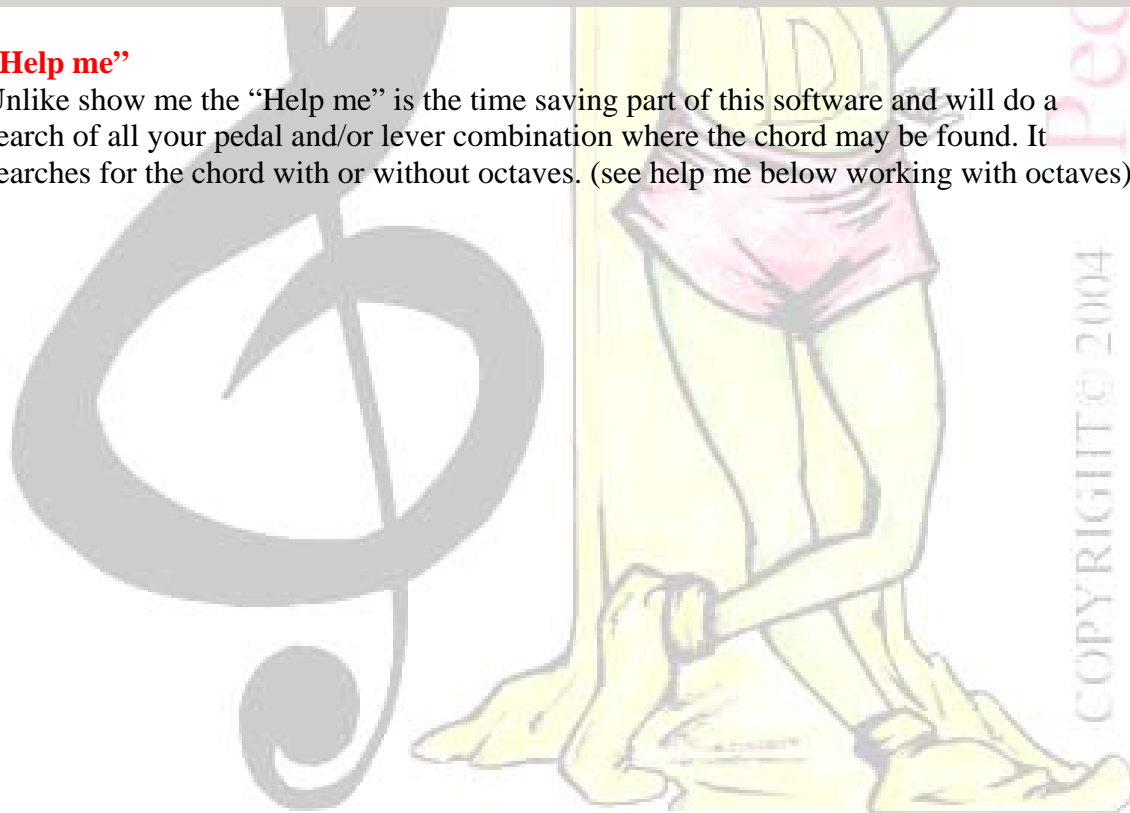
With octaves turned off if you put in a 2nd C or more to the far right all C's will default to the last C color to alert you to the use of multiple C's.





“Help me”

Unlike show me the “Help me” is the time saving part of this software and will do a search of all your pedal and/or lever combination where the chord may be found. It searches for the chord with or without octaves. (see help me below working with octaves)



Fret Board Configuration

Tab 1 Tab 2 Print Fret Tablature

	Open	1	2	3	4	5	6	7	8	9	10	11	1
1													
2													
3													
4									C 5				
5									G 4				
6									E 4				
7													
8									C 4				
9													
10													

Chord/Scale/Octave

1 C E G C R
 1 R R R R R R R R
 4 4 4 5 0 0 0 R

L1 L2 L3 L4 X5
 P1 P2 P3 P4

Chord
 Scale/Melody
 Show Octave

Show Me
 Help me

Finding specific octave chord inversions: Working with octaves.

Using Octave will make things quick if you want to find a specific chord inversion. Example if you were looking for a full chord C4 major with a C5 note on top. First make sure octave is checked, then using the drop down under chords from left to right select C, E, G, C and then with the arrow select 4, 4, 4, and 5 octave. Check the chord box and click on show me, this will show you all open position frets where you will find this chord inversion.

Show Octave:

Show Octave is where you check/uncheck the box Show Octave to set the program to show notes in the octave ranges on Tab1 and Tab2.

4 4 4 0 0 0 0

The octave selection drop downs will appear when “octave is turned on”.

Fret Board Configuration

Tab 1 Tab 2 Print Fret Tablature

	Open	1	2	3	4	5	6	7	8	9	10	11	1
1													
2													
3				C 5									
4				G 4									
5				E 4									
6				C 4									
7													
8													
9													
10													

Chord/Scale/Octave

1 C E G C R
 1 R R R R R R R R R R
 4 4 4 5 0 0 0 R

L1 L2 L3 L4 X5
 P1 P2 P3 P4

L4 <F13>
 L4-P1-P2 <F13>
 P2-P3 <F13>
 X5-L4-P3 <F10><F13>

Chord
 Scale/Melody
 Show Octave

Show Me
 Help me

Finding specific octave chord inversions: Continued

The open positions will be displayed first (above) and then as you select each search results from the search results window, each of your selections will be displayed. (Note if more than one of the same notes is found you can take your pick of which one to use). You may also right click to remove the note from view on the note grid.

To start a new search simply put in the new notes and click show me. You may also clear out your previous selection with the R button then click show me to clear the display.



R stands for remove.

Fret Board Configuration

Tab 1 Tab 2 Print Fret Tablature

	Open	1	2	3	4	5	6	7	8	9	10	11	1
1													
2									C 5				
3													
4									C 5				
5									G 4				
6									E 4				
7													
8									C 4				
9													
10													

Chord/Scale/Octave

1 C E G C R
 1 C E G C R
 4 4 4 5 0 0 0 R

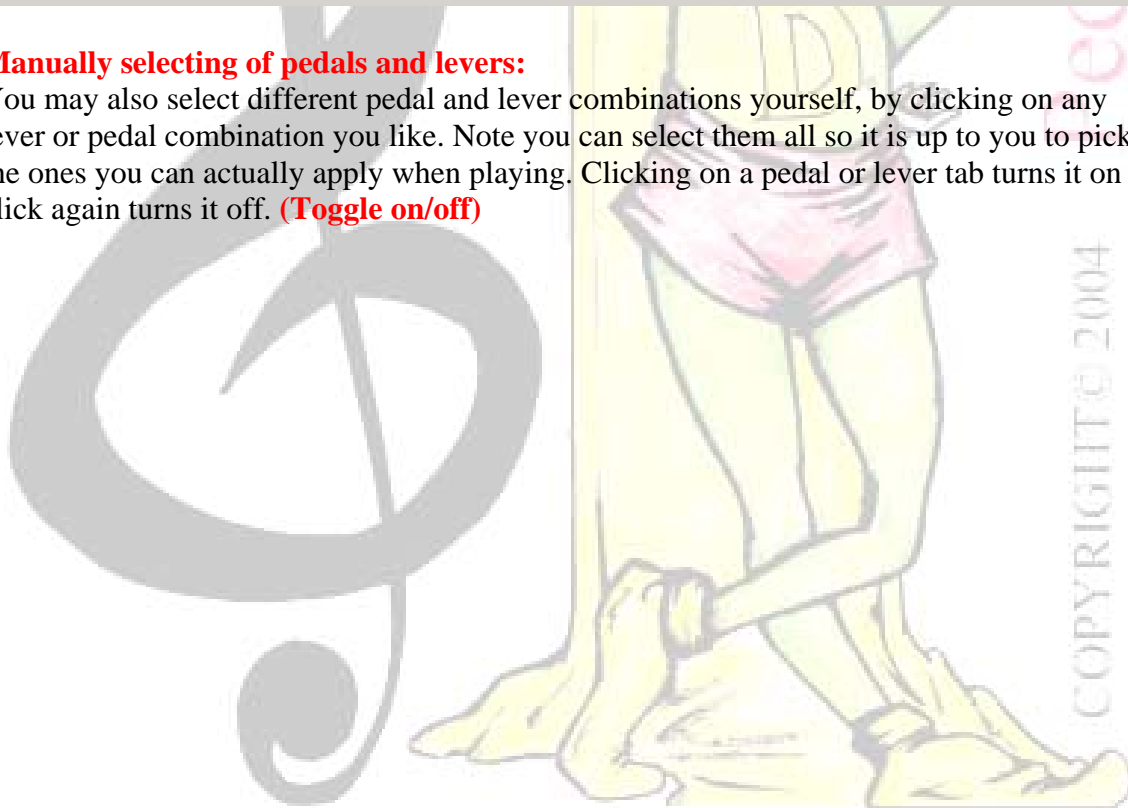
L1 L2 L3 L4 X5
 P1 P2 P3 P4

Chord
 Scale/Melody
 Show Octave

Show Me
 Help me

Manually selecting of pedals and levers:

You may also select different pedal and lever combinations yourself, by clicking on any lever or pedal combination you like. Note you can select them all so it is up to you to pick the ones you can actually apply when playing. Clicking on a pedal or lever tab turns it on click again turns it off. **(Toggle on/off)**



Fret Board Configuration

Tab 1 **Tab 2** Print Fret Tablature

	Open	1	2	3	4	5	6	7	8	9	10	11	1
1	G# 4	A 4	A# 4	B 4	C 5	C# 5	D 5	D# 5	E 5	F 5	F# 5	G 5	G#
2	E 4	F 4	F# 4	G 4	G# 4	A 4	A# 4	B 4	C 5	C# 5	D 5	D# 5	E 5
3	G# 4	A 4	A# 4	B 4	C 5	C# 5	D 5	D# 5	E 5	F 5	F# 5	G 5	G#
4	E 4	F 4	F# 4	G 4	G# 4	A 4	A# 4	B 4	C 5	C# 5	D 5	D# 5	E 5
5	B 3	C 4	C# 4	D 4	D# 4	E 4	F 4	F# 4	G 4	G# 4	A 4	A# 4	B 4
6	G# 3	A 3	A# 3	B 3	C 4	C# 4	D 4	D# 4	E 4	F 4	F# 4	G 4	G#
7	F# 3	G 3	G# 3	A 3	A# 3	B 3	C 4	C# 4	D 4	D# 4	E 4	F 4	F#
8	E 3	F 3	F# 3	G 3	G# 3	A 3	A# 3	B 3	C 4	C# 4	D 4	D# 4	E 4
9	D 3	D# 3	E 3	F 3	F# 3	G 3	G# 3	A 3	A# 3	B 3	C 4	C# 4	D 4
10	B 2	C 3	C# 3	D 3	D# 3	E 3	F 3	F# 3	G 3	G# 3	A 3	A# 3	B 3

Sequence # 1 Add To Tablature

Show Octave

L1 L2 L3 L4 X5
P1 P2 P3 P4

Clear Blue
Clear Mark

Pedal and levers can be applied manually on Tab1 and Tab2:

Note that on Tab 2 the notes are highlighted and may be cleared with the Clear Mark button.

Tab 1 **Tab 2** Print

	Open	1	2	3	4	5	6	7	8	9	10	11	1
1		G					C				E		
2		E			G					C			
3					C				E			G	
4	E			G					C				E
5		C				E			G				
6					C				E			G	
7		G					C				E		
8	E			G					C				E
9			E			G					C		
10		C				E			G				

Chord/Scale/Octave

1 C E G [] [] [] R
1 [] [] [] [] [] [] R

Chord
 Scale/Melody

L1 L2 L3 L4 X5
P1 P2 P3 P4

Show Me
Help me

For all notes: (Help me will not work for this function)

Uncheck octave, chord and Scale/Melody then click find and see the complete fret board of notes you have selected, as in Christmas Story “They go all over”.

The screenshot shows a software interface for a guitar fretboard. At the top, there are tabs for 'Fret Board' and 'Configuration'. Below that, there are tabs for 'Tab 1', 'Tab 2', 'Print Fret', and 'Tablature'. The main area contains two fretboard grids. The left grid has columns for 'Open', '1', '2', '3', '4', and '5' frets, and rows for strings 1 through 10. A red box labeled 'B3' is on the 6th string, 3rd fret. The right grid is identical but also has a red box labeled 'B3' on the 6th string, 3rd fret. Below the grids is a 'Chord/Scale/Octave' section with a row of color-coded buttons (red, blue, green, orange, red, grey, yellow) and a 'R' button. Below that is another row of buttons (red, blue, green, orange, red, grey, yellow) and a 'R' button. There are also buttons for '3', '0', '0', '0', '0', '0', '0' and a 'R' button. At the bottom, there are buttons for 'L1', 'L2', 'L3', 'L4', 'X5', 'P1', 'P2', 'P3', 'P4', and a large empty text box. To the right of the text box are buttons for 'Show Me' and 'Help me'. There are also checkboxes for 'Chord', 'Scale/Melody', and 'Show Octave'.

Fret Board Page Tab1 and Tab2: Special note

The **“LEFT HAND DIVIDER”** can be dragged to the right for multiple fret boards. This works great for working out licks both up and down the neck. Try opening two screen shots one at open tuning and now use the scroll bar to set the other at fret 12 you can now see both octaves at one time. This also allows you to see the fret numbers as you work down the fret board. Drag it all the way to the right so that the string numbers are anchored on the right side. “See Below”

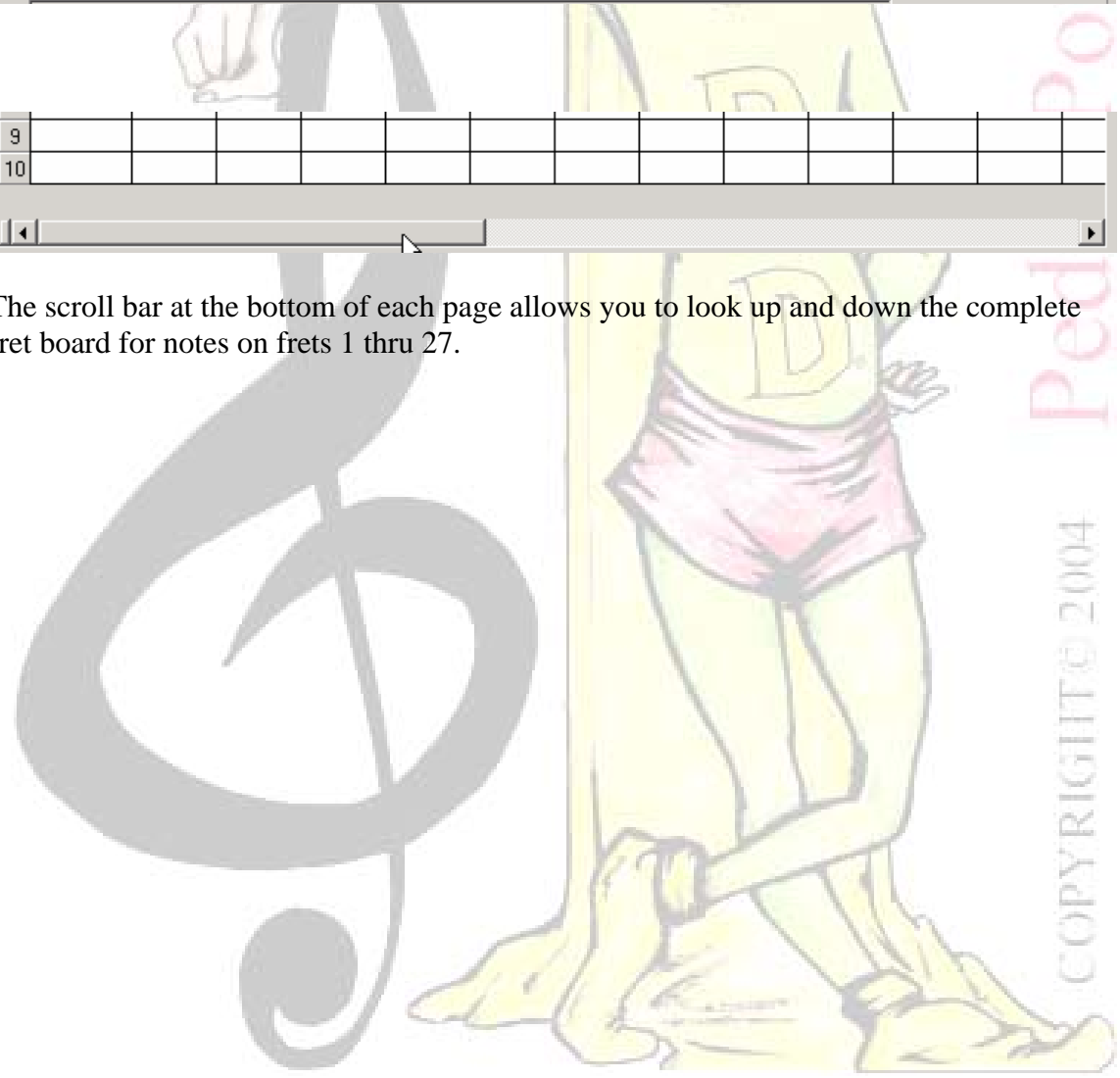
Tab 1 Tab 2 Print Fret Tablature

	Open	1	2	3	4	5	6	7	8	9	10	11	
1													1
2													2
3													3
4													4
5													5
6													6
7													7
8													8
9													9
10													10

Chord/Scale/Octave

9														
10														

The scroll bar at the bottom of each page allows you to look up and down the complete fret board for notes on frets 1 thru 27.



Fret Board Configuration

Tab 1 Tab 2 Print Fret Tablature

	Open	1	2	3	4	5	6	7	8	9	10	11	1
1													
2													
3													
4	E	F		G		A		B	C		D		E
5	B	C		D		E	F		G		A		B
6													
7													
8													
9													
10													

Chord/Scale/Octave

4 C D E F G A B R

5 E F G A B C D R

Chord Scale/Melody Show Octave

L1 L2 L3 L4 X5

P1 P2 P3 P4

Show Me Help me

Melody: The bottom row of 7 notes is to help with melody notes and scales.

Melody is set up for melody note work or they can run with the scale notes, you can use the two rows of seven notes to work out melody or scales.

Chord/Scale/Oct

4

5

The up down arrows allow you to pick which strings you work with and the notes are selected with the drop down menu as under chords. They are octave sensitive so you can turn octave on/off as you need to. (It is recommend not using octave here as it applies to both rows of notes and makes it hard to find pairs but it will work if you need it).

Fret Board | Configuration

Tab 1 | Tab 2 | Print Fret | Tablature

	Open	1	2	3	4	5	6	7	8	9	10	11	1
1													
2													
3													
4									C				
5													
6									E				
7													
8													
9													
10													

Chord/Scale/Octave

1 E C G A D F R

1 E C G A D F R

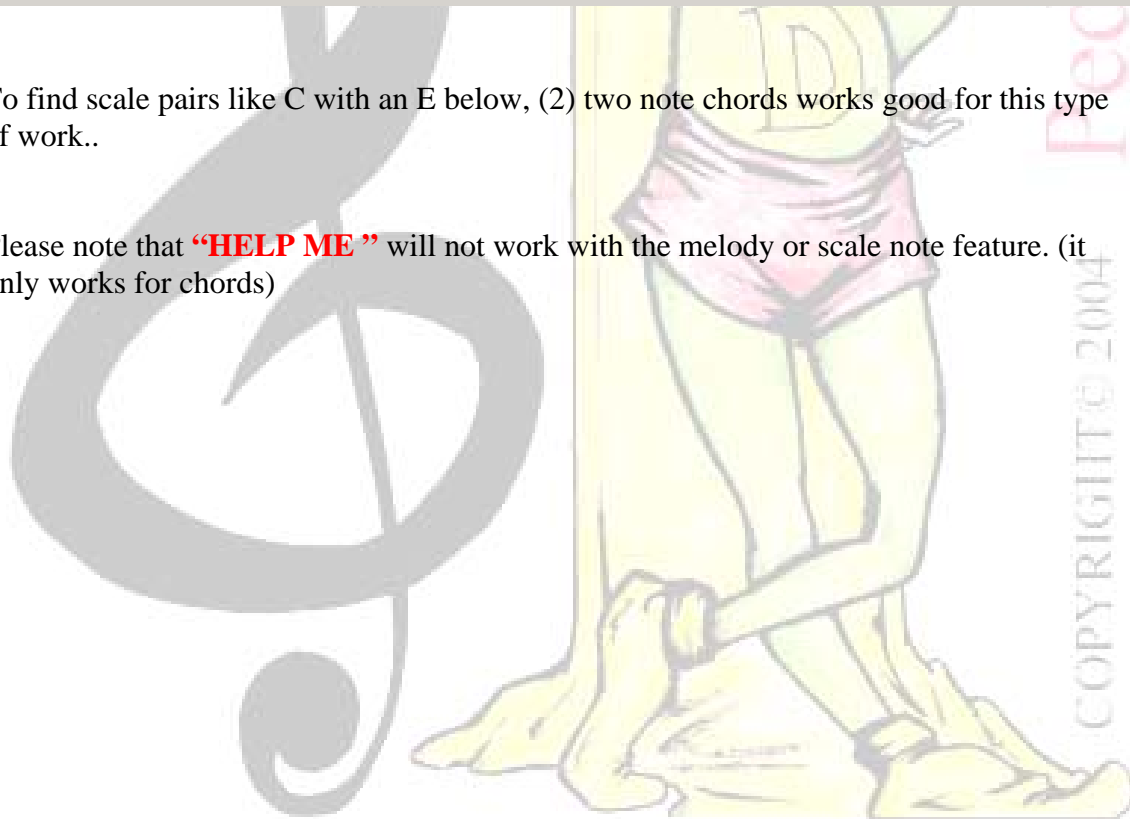
Chord
 Scale/Melody
 Show Octave

Show Me
Help me

L1 L2 L3 L4 X5
P1 P2 P3 P4

To find scale pairs like C with an E below, (2) two note chords works good for this type of work..

Please note that **“HELP ME”** will not work with the melody or scale note feature. (it only works for chords)



Tab 1 **Tab 2** Print Fret Tablature

	Open	1	2	3	4	5	6	7	8	9	10	11	12
1	F# 4	G 4	G# 4	A 4	A# 4	B 4	C 5	C# 5	D 5	D# 5	E 5	F 5	F# 5
2	D# 4	E 4	F 4	F# 4	G 4	G# 4	A 4	A# 4	B 4	C 5	C# 5	D 5	D# 5
3	G# 4	A 4	A# 4	B 4	C 5	C# 5	D 5	D# 5	E 5	F 5	F# 5	G 5	G# 5
4	E 4	F 4	F# 4	G 4	G# 4	A 4	A# 4	B 4	C 5	C# 5	D 5	D# 5	E 5
5	B 3	C 4	C# 4	D 4	D# 4	E 4	F 4	F# 4	G 4	G# 4	A 4	A# 4	B 4
6	G# 3	A 3	A# 3	B 3	C 4	C# 4	D 4	D# 4	E 4	F 4	F# 4	G 4	G# 4
7	F# 3	G 3	G# 3	A 3	A# 3	B 3	C 4	C# 4	D 4	D# 4	E 4	F 4	F# 4
8	E 3	F 3	F# 3	G 3	G# 3	A 3	A# 3	B 3	C 4	C# 4	D 4	D# 4	E 4
9	D 3	D# 3	E 3	F 3	F# 3	G 3	G# 3	A 3	A# 3	B 3	C 4	C# 4	D 4
10	B 2	C 3	C# 3	D 3	D# 3	E 3	F 3	F# 3	G 3	G# 3	A 3	A# 3	B 3

Horizontal scrollbar

Sequence #

Show Octave

L1 L2 L3 L4 X5
P1 P2 P3 P4

Empty text input field

Tab 1 **Tab 2** Print Fret Tablature

	Open	1	2	3	4	5	6	7	8	9	10	11	12
1	F#	G	G#	A	A#	B	C	C#	D	D#	E	F	F#
2	D#	E	F	F#	G	G#	A	A#	B	C	C#	D	D#
3	G#	A	A#	B	C	C#	D	D#	E	F	F#	G	G#
4	E	F	F#	G	G#	A	A#	B	C	C#	D	D#	E
5	B	C	C#	D	D#	E	F	F#	G	G#	A	A#	B
6	G#	A	A#	B	C	C#	D	D#	E	F	F#	G	G#
7	F#	G	G#	A	A#	B	C	C#	D	D#	E	F	F#
8	E	F	F#	G	G#	A	A#	B	C	C#	D	D#	E
9	D	D#	E	F	F#	G	G#	A	A#	B	C	C#	D
10	B	C	C#	D	D#	E	F	F#	G	G#	A	A#	B

Horizontal scrollbar

Sequence #

Show Octave

L1 L2 L3 L4 X5
P1 P2 P3 P4

Empty text input field

Fret board page Tab2:

This is where you can highlight a fret or a string to work with. (**Highlight turns the complete string or fret row blue with bold white notes**)

To highlight a fret or string row in the fret tab2 simple click on the fret or string row number in the gray area over the number of the string or fret you wish to use.

To turn off the fret or string row highlighted hold down the CTRL key and click in the same area you used to turn it on. The Clear Blue button will not work to clear this function, it only works for single note selections.

Fret Board Configuration

Tab 1 **Tab 2** Print Fret Tablature

	Open	1	2	3	4	5	6	7	8	9	10	11	12
1	F# 4	G 4	G# 4	A 4	A# 4	B 4	C 5	C# 5	D 5	D# 5	E 5	F 5	F# 5
2	D# 4	E 4	F 4	F# 4	G 4	G# 4	A 4	A# 4	B 4	C 5	C# 5	D 5	D# 5
3	G# 4	A 4	A# 4	B 4	C 5	C# 5	D 5	D# 5	E 5	F 5	F# 5	G 5	G# 5
4	E 4	F 4	F# 4	G 4	G# 4	A 4	A# 4	B 4	C 5	C# 5	D 5	D# 5	E 5
5	B 3	C 4	C# 4	D 4	D# 4	E 4	F 4	F# 4	G 4	G# 4	A 4	A# 4	B 4
6	G# 3	A 3	A# 3	B 3	C 4	C# 4	D 4	D# 4	E 4	F 4	F# 4	G 4	G# 4
7	F# 3	G 3	G# 3	A 3	A# 3	B 3	C 4	C# 4	D 4	D# 4	E 4	F 4	F# 4
8	E 3	F 3	F# 3	G 3	G# 3	A 3	A# 3	B 3	C 4	C# 4	D 4	D# 4	E 4
9	D 3	D# 3	E 3	F 3	F# 3	G 3	G# 3	A 3	A# 3	B 3	C 4	C# 4	D 4
10	B 2	C 3	C# 3	D 3	D# 3	E 3	F 3	F# 3	G 3	G# 3	A 3	A# 3	B 3

Sequence # 1 Add To Tablature

Show Octave

L1 L2 L3 L4 X5

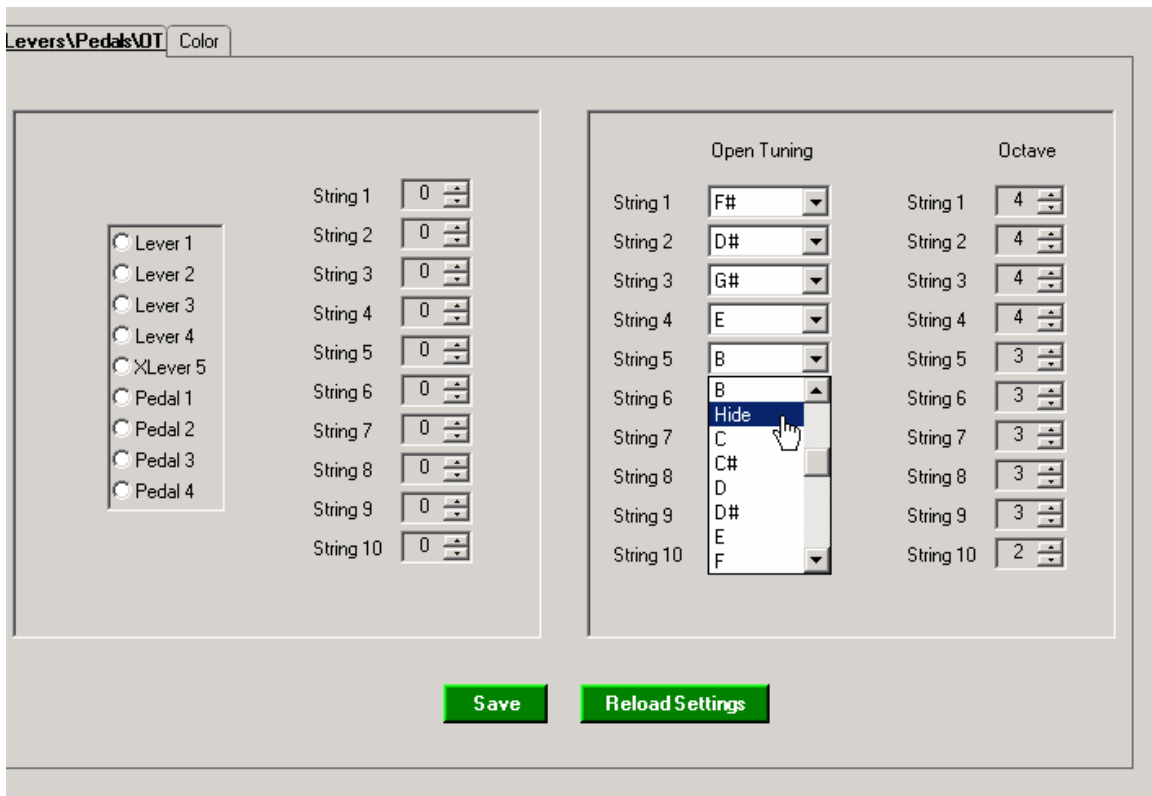
P1 P2 P3 P4

Clear Blue

Clear Mark

(NOTE)

This is a great page to work out scales and licks. Right click a note to turn on/off the highlighted transparent color to help keep track of your work. When done simply click on Clear Mark to clear out the work area .



(NOTE)

This tab2 also has the feature that lets you set each of the string to “HIDE” in the configuration page to remove complete string rows, this is helpful when working with specific string groups. The hide string function will hide them on Tab2. On Tab1 they will not be displayed.



Tab 1 **Tab 2** Print Fret Tablature

	Open	1	2	3	4	5	6	7	8	9	10	11	12
1	F#	G	G#	A	A#	B	C	C#	D	D#	E	F	F#
2	D#	E	F	F#	G	G#	A	A#	B	C	C#	D	D#
3	G#	A	A#	B	C	C#	D	D#	E	F	F#	G	G#
4	E	F	F#	G	G#	A	A#	B	C	C#	D	D#	E
5													
6	G#	A	A#	B	C	C#	D	D#	E	F	F#	G	G#
7	F#	G	G#	A	A#	B	C	C#	D	D#	E	F	F#
8	E	F	F#	G	G#	A	A#	B	C	C#	D	D#	E
9	D	D#	E	F	F#	G	G#	A	A#	B	C	C#	D
10	B	C	C#	D	D#	E	F	F#	G	G#	A	A#	B

Sequence # Add To Tablature

Show Octave

L1 L2 L3 L4 X5
P1 P2 P3 P4

Clear Blue
Clear Mark

Note that the B string is set to hide and is no longer visible.

Tab 1 Tab 2 **Print Fret** Tablature

	Open	1	2	3	4	5	6	7	8	9	10	11	12
1	F#	G	G#	A	A#	B	C	C#	D	D#	E	F	F#
2	D#	E	F	F#	G	G#	A	A#	B	C	C#	D	D#
3	G#	A	A#	B	C	C#	D	D#	E	F	F#	G	G#
4	E	F	F#	G	G#	A	A#	B	C	C#	D	D#	E
5	B	C	C#	D	D#	E	F	F#	G	G#	A	A#	B
6	G#	A	A#	B	C	C#	D	D#	E	F	F#	G	G#
7	F#	G	G#	A	A#	B	C	C#	D	D#	E	F	F#
8	E	F	F#	G	G#	A	A#	B	C	C#	D	D#	E
9	D	D#	E	F	F#	G	G#	A	A#	B	C	C#	D
10	B	C	C#	D	D#	E	F	F#	G	G#	A	A#	B

Report Title:

Display Frets: Frets 0-12 Frets 12-27 All Frets Print Tab2

ExportToExcel
Print

Printing Tab1 and Tab2:

Print allows you to print out Tab1 or Tab2 with check/uncheck the Print 2 box. Note that you will not see the Tab2 page for print until you check the Print 2 box and click "Print" then your work will be displayed before printing. Above please note that the Print Tab2 is checked which displays Tab2 for printing.

Report Title:

Display Frets: Frets 0-12 Print Tab2
 Frets 1-27
 All Frets

Print Frets 0-12 will give the largest print out.

Tab 1	Tab 2	Print Fret	Tablature						
	Open	1	2	3	4	5	6	7	8
8	E 3	F 3	F# 3	G 3	G# 3	A 3	A# 3	B 3	C 4
9	D 3	D# 3	E 3	F 3	F# 3	G 3	G# 3	A 3	A# 3
10	B 2	C 3	C# 3	D 3	D# 3	E 3	F 3	F# 3	G 3
		PUT	YOUR	NOTE	HERE				
				L1	L2	L3	L4	X5	

Scroll down to the area below the 10th string, this allows you to make work notes and remarks for print out. Each rectangle allows up to a maximum of 5 letters or numbers.

Pedal Power
COPYRIGHT © 2004

Tab 1 Tab 2 **Print Fret** Tablature

Open	1	2	3	4	5	6	7	8	9	10	11
1											
2											
3											
4											
5	B	C		D		E	F		G		A
6											
7											
8											
9											
10											

Report Title:

Display Frets: Frets 0-12 Frets 12-27 All Frets Print Tab2

Print Tab1 requires that the Print Tab2 box be unchecked:

Fret Board Configuration

Tab 1 **Tab 2** Print Fret Tablature

Open	1	2	3	4	5	6	7	8	9	10	11	12	
1	F# 4	G 4	G# 4	A 4	A# 4	B 4	C 5	C# 5	D 5	D# 5	E 5	F 5	F# 5
2	D# 4	E 4	F 4	F# 4	G 4	G# 4	A 4	A# 4	B 4	C 5	C# 5	D 5	D# 5
3	G# 4	A 4	A# 4	B 4	C 5	C# 5	D 5	D# 5	E 5	F 5	F# 5	G 5	G# 5
4	E 4	F 4	F# 4	G 4	G# 4	A 4	A# 4	B 4	C 5	C# 5	D 5	D# 5	E 5
5	B 3	C 4	C# 4	D 4	D# 4	E 4	F 4	F# 4	G 4	G# 4	A 4	A# 4	B 4
6	G# 3	A 3	A# 3	B 3	C 4	C# 4	D 4	D# 4	E 4	F 4	F# 4	G 4	G# 4
7	F# 3	G 3	G# 3	A 3	A# 3	B 3	C 4	C# 4	D 4	D# 4	E 4	F 4	F# 4
8	E 3	F 3	F# 3	G 3	G# 3	A 3	A# 3	B 3	C 4	C# 4	D 4	D# 4	E 4
9	D 3	D# 3	E 3	F 3	F# 3	G 3	G# 3	A 3	A# 3	B 3	C 4	C# 4	D 4
10	B 2	C 3	C# 3	D 3	D# 3	E 3	F 3	F# 3	G 3	G# 3	A 3	A# 3	B 3

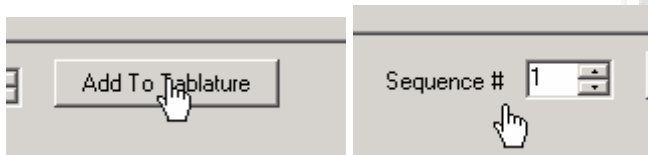
Sequence #

Show Octave

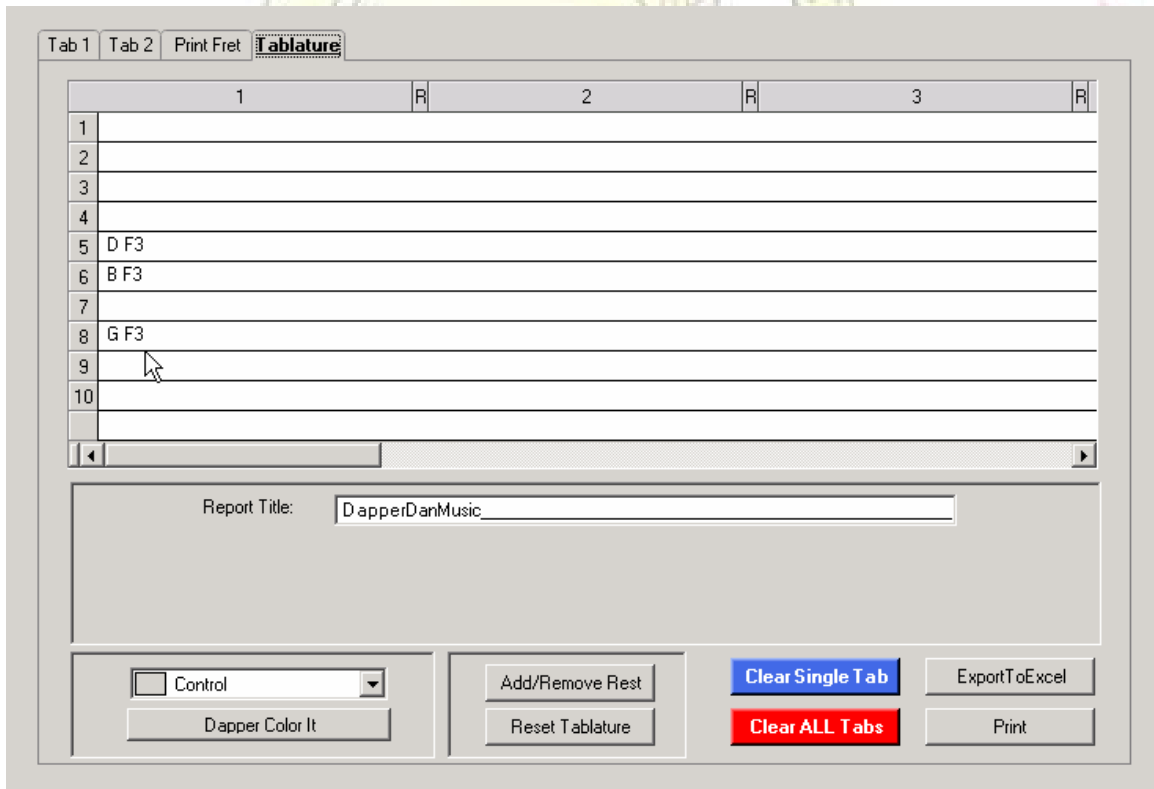
L1 L2 L3 L4 X5
P1 P2 P3 P4

Tablature is written from Tab2:

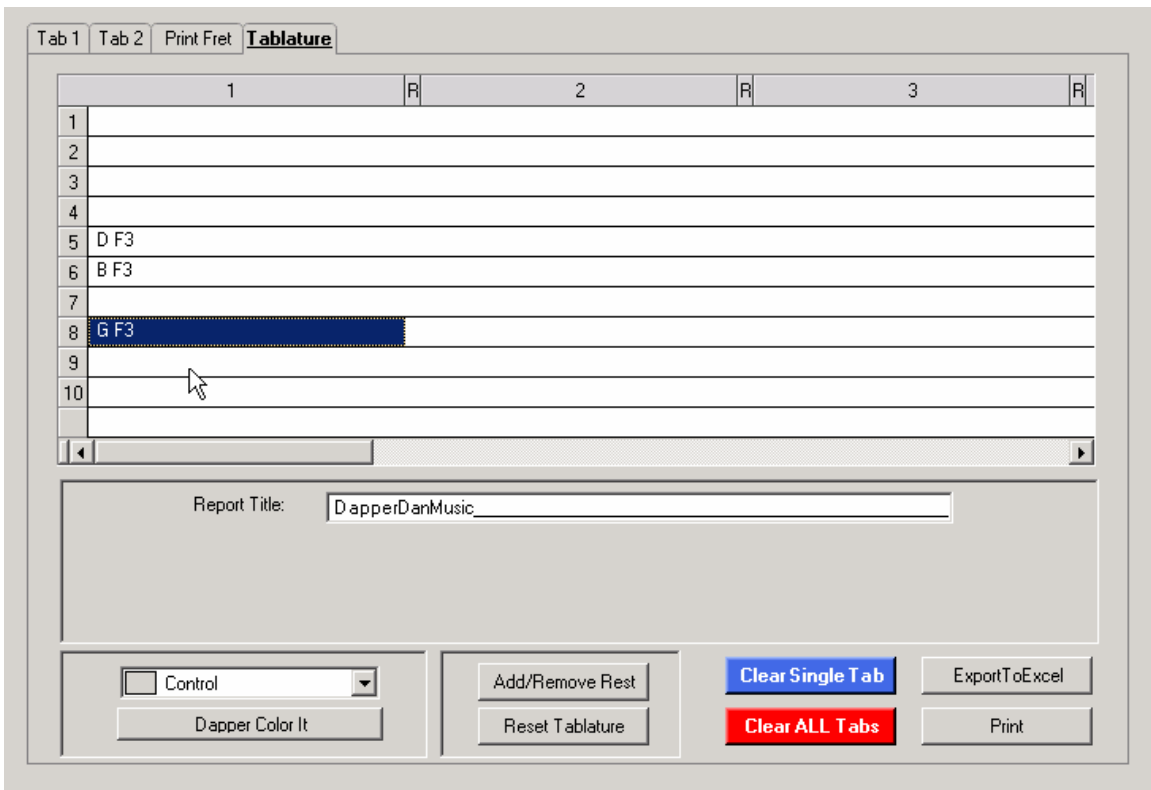
The Tab2 page will add the notes you select to the tab page. Above the G, B, and D have been highlighted from the chord search page and now by clicking the Add To Tablature button the three notes will be put on the Tab page in the first sequence.



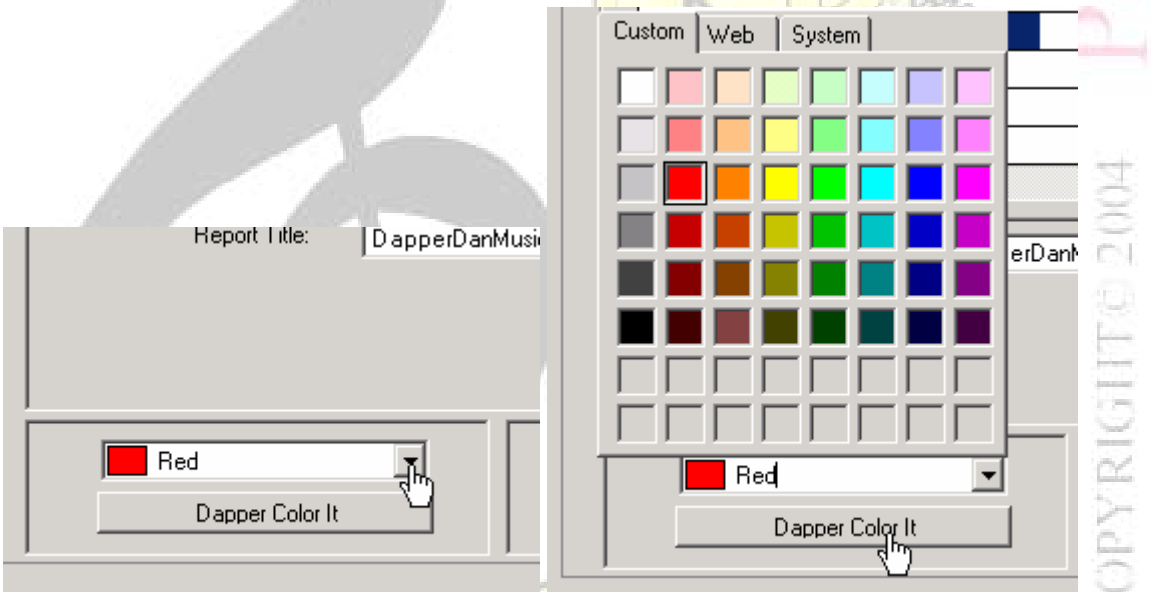
Click Add To Tablature to add to the 1st sequence



The notes with the respective fret are displayed on the string line number.
This is much like your basic tab would be written.



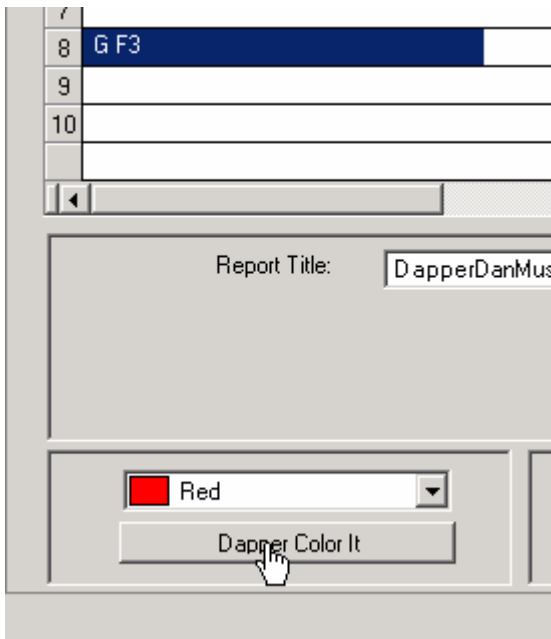
To color your input hold down the CTRL key and click on the note you wish to color.



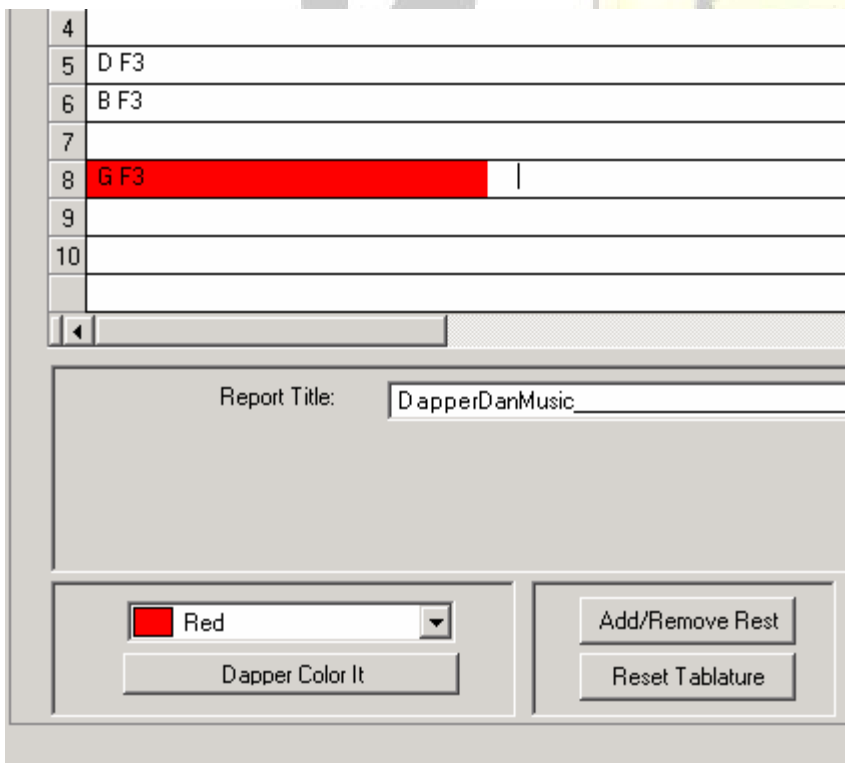
Step 1

Step 2

Click the drop down list and pick a color from the color tile.



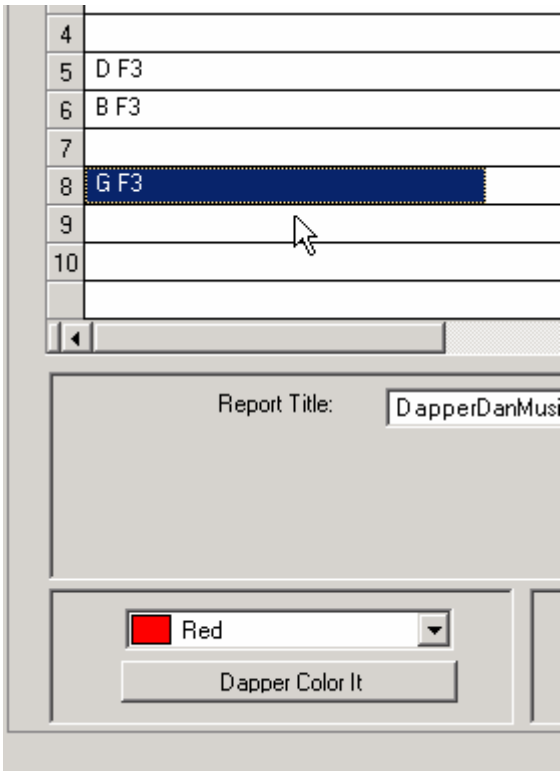
Then click “Dapper Color it” to apply the color to the Tab.
This color thing is a big help in quickly locating the 1st 3rd and 5th of your chord.



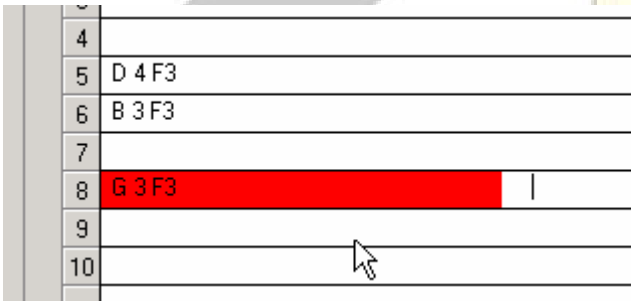
NOTE: Please use CTRL key to select and the ESC key to deselect while clicking.

Pedal Power

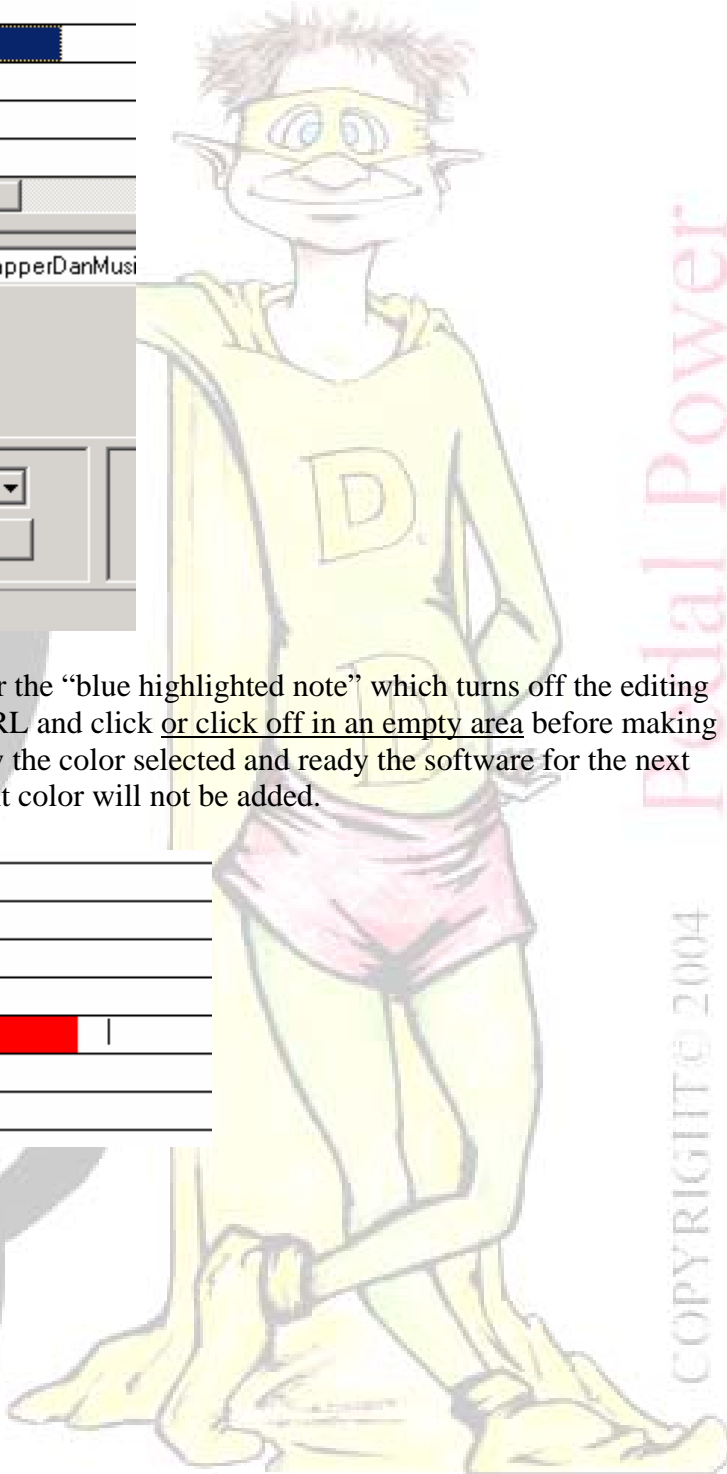
COPYRIGHT © 2004



When highlighted you must clear the “blue highlighted note” which turns off the editing feature of this program with CTRL and click or click off in an empty area before making another selection. This will show the color selected and ready the software for the next color selection otherwise the next color will not be added.

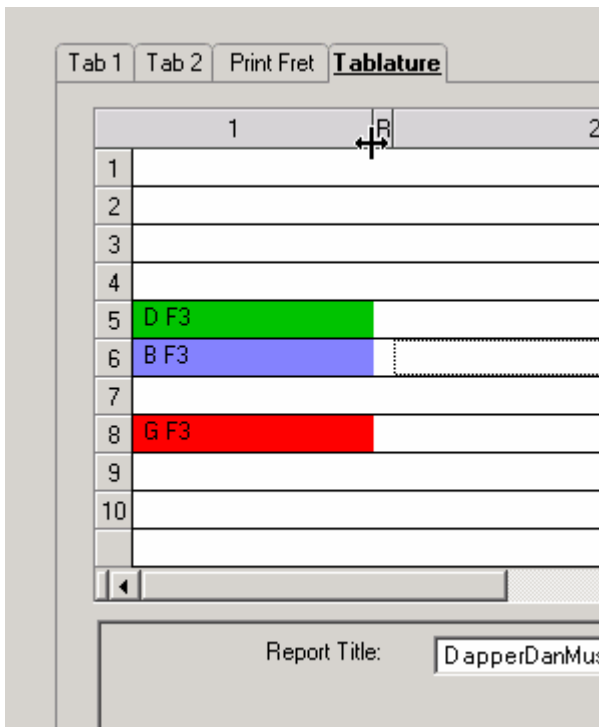


Color red displayed:

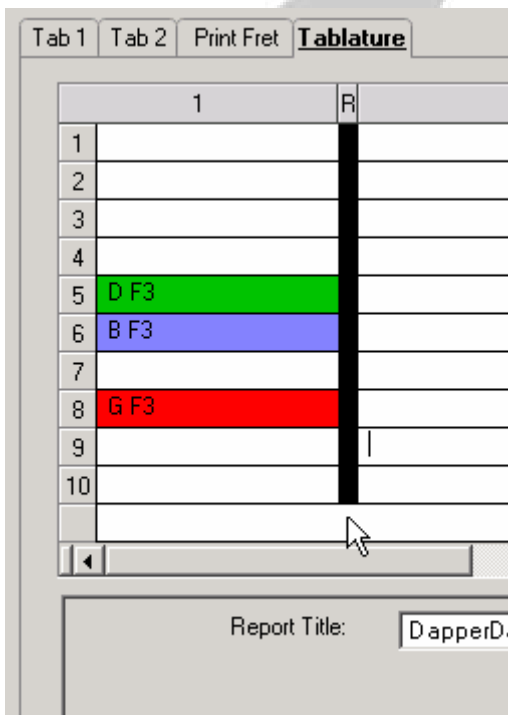


Redal Power

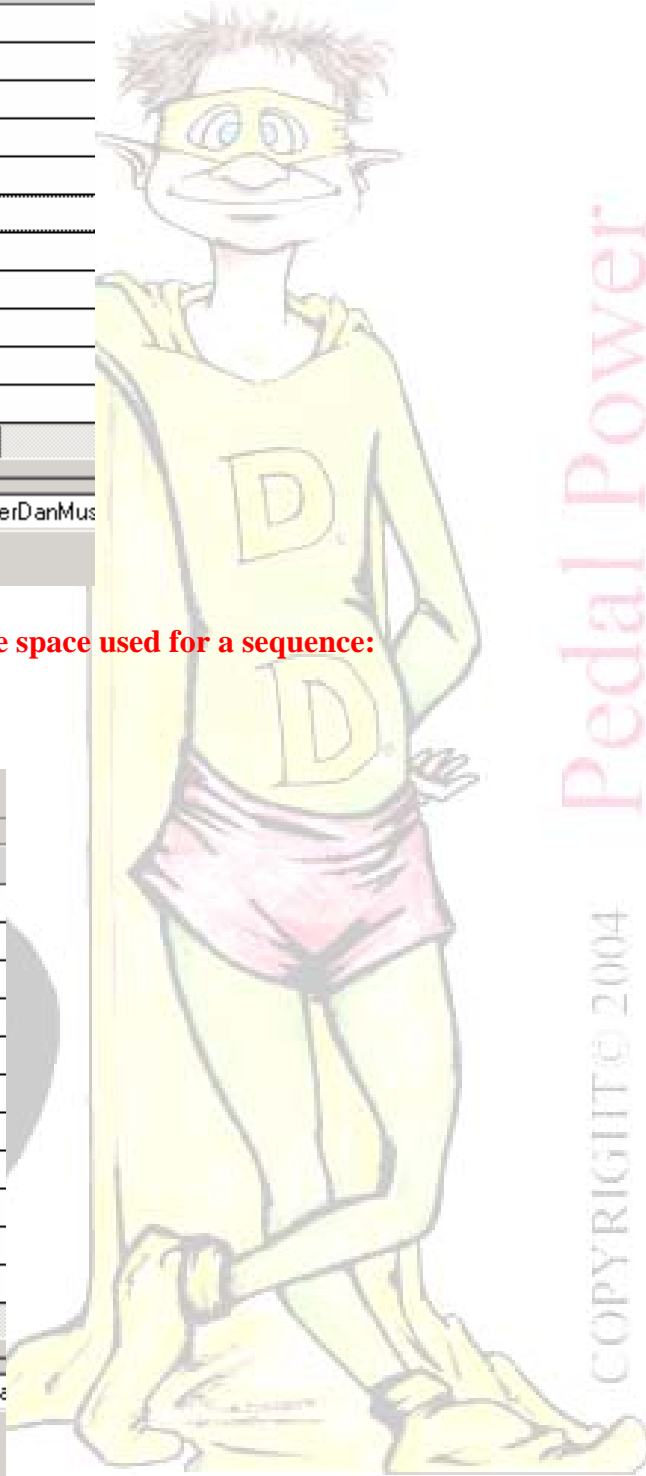
COPYRIGHT © 2004



Rest bar is dragged left to control the space used for a sequence:



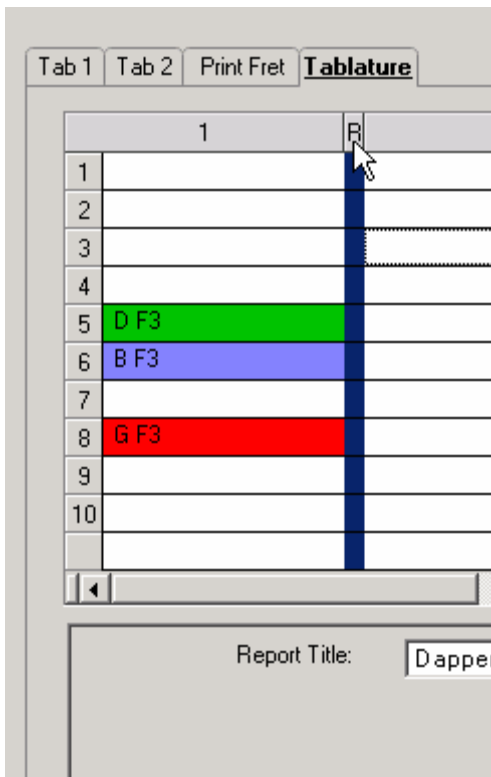
Add a rest or divider stop bar to your tab.



Pedal Power

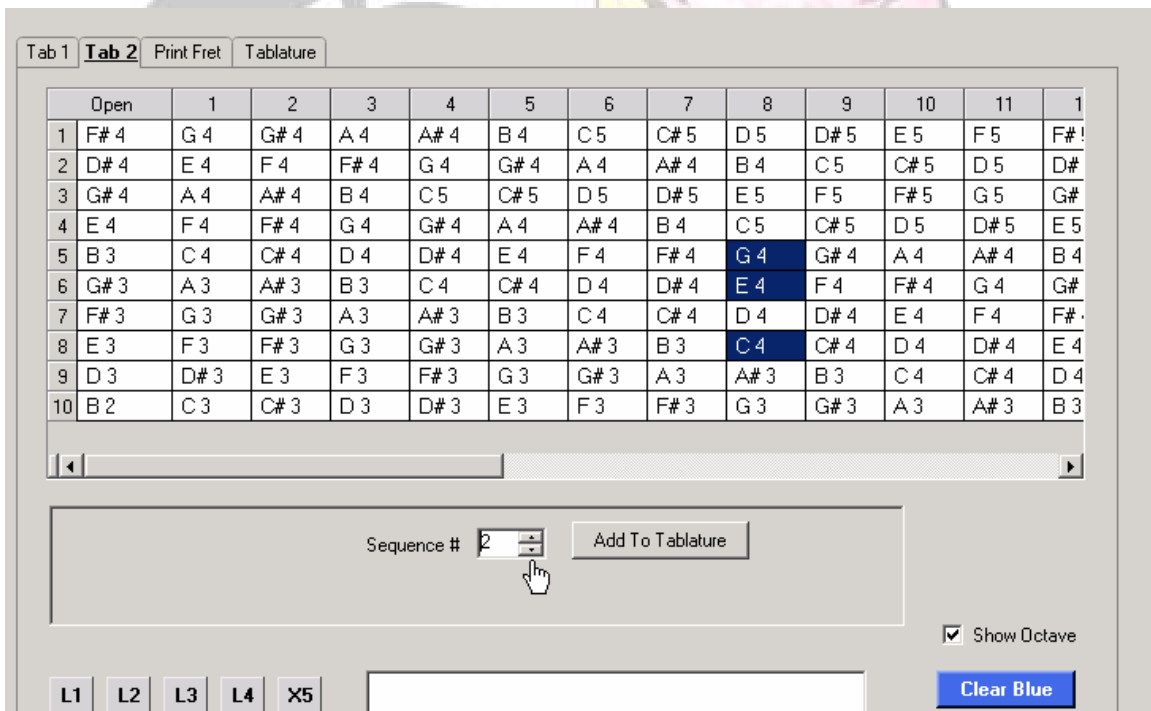
COPYRIGHT © 2004

To add a rest or stop bar to your tab use CTRL and click on the “R” at the top of the tab page, this will highlight the bar then click Add/Remove Rest. This same function repeated will remove the rest bar.

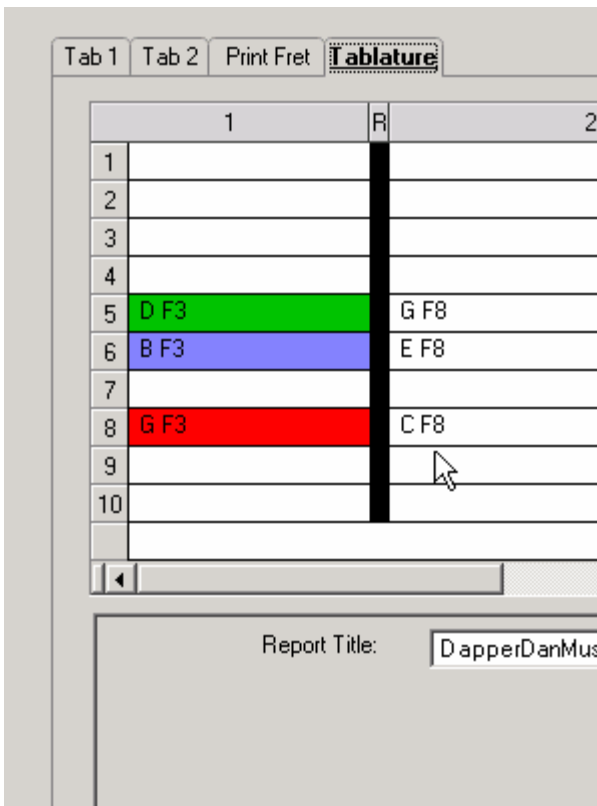


Pedal Power

To highlight use the CTRL and click function.



Make your next selection, advance the sequence number up one sequence, in this case up to number 2 or as desired then click Add To Tablature.



That's all there is to building a tablature page for print out.



Pedal Power

COPYRIGHT © 2004

Tab 1 Tab 2 Print Fret **Tablature**

	1	R	2	R	3	R
1						
2						
3						
4						
5	D F3		G F8			
6	B F3		E F8			
7						
8	G F3		C F8			
9						
10						

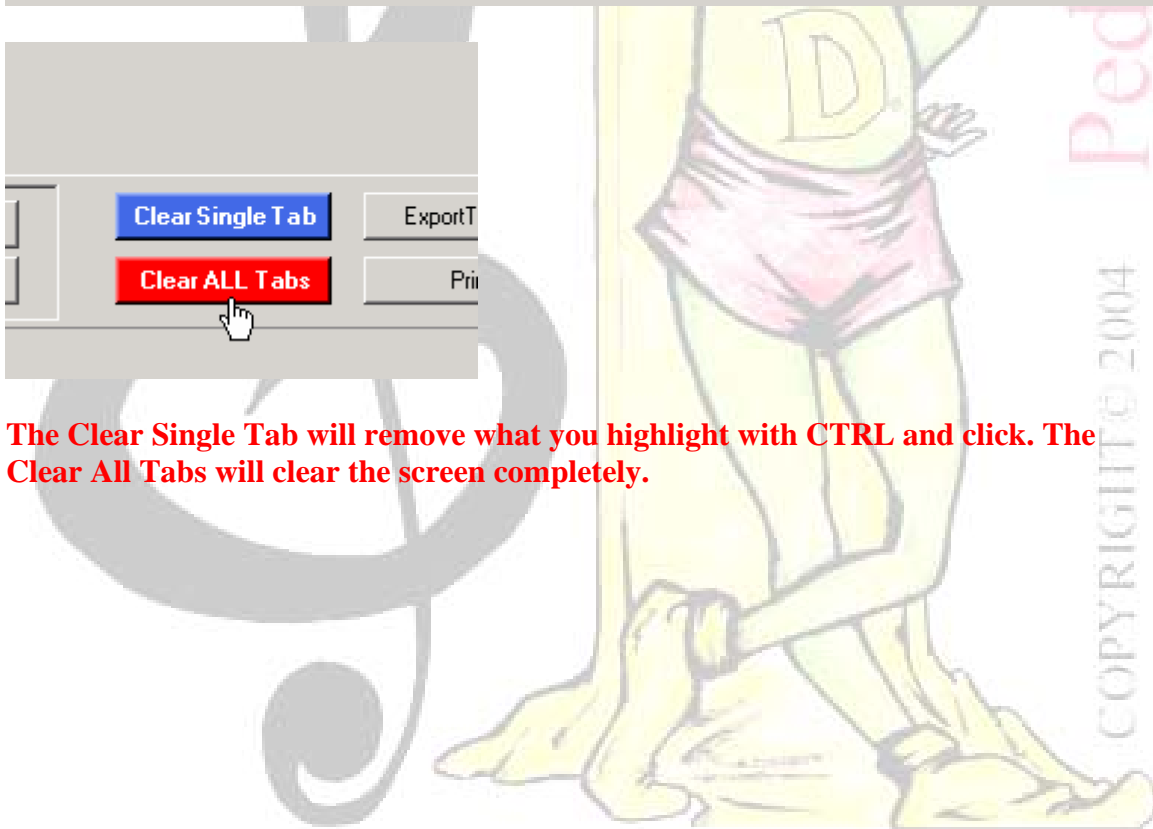
Report Title:

0, 192, 0
Dapper Color It

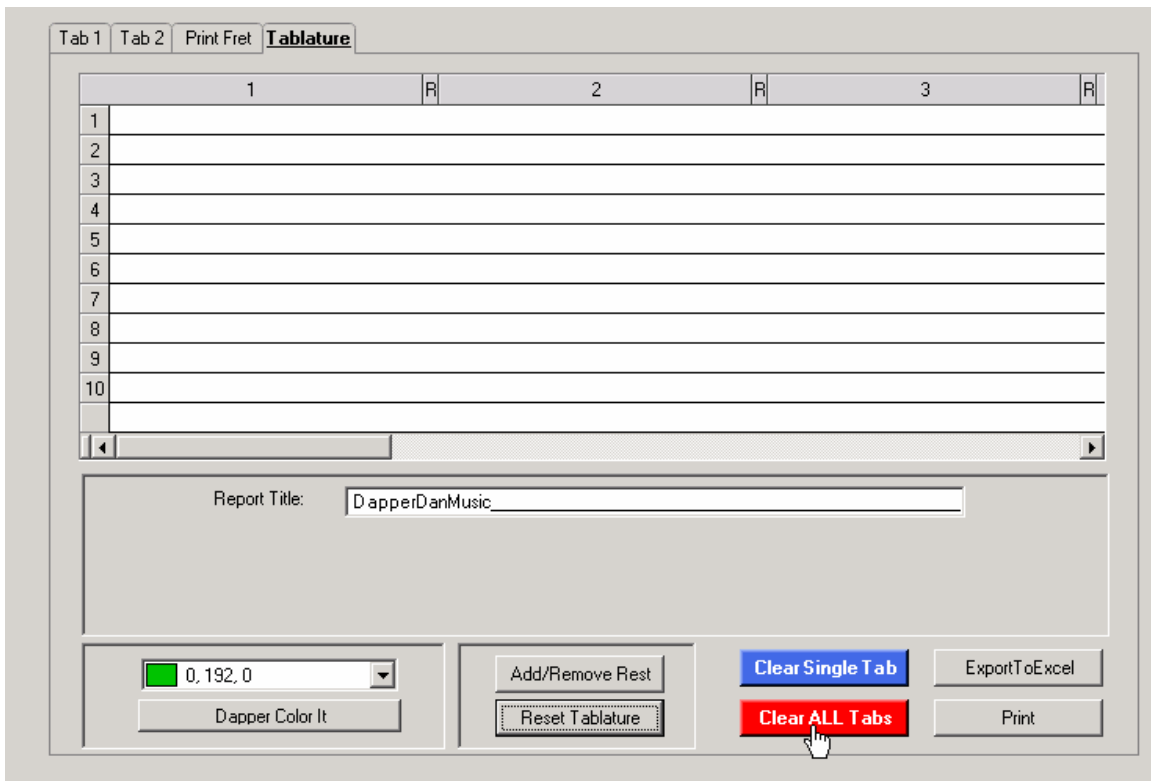
Add/Remove Rest
Reset Tablature

Clear Single Tab
Clear ALL Tabs

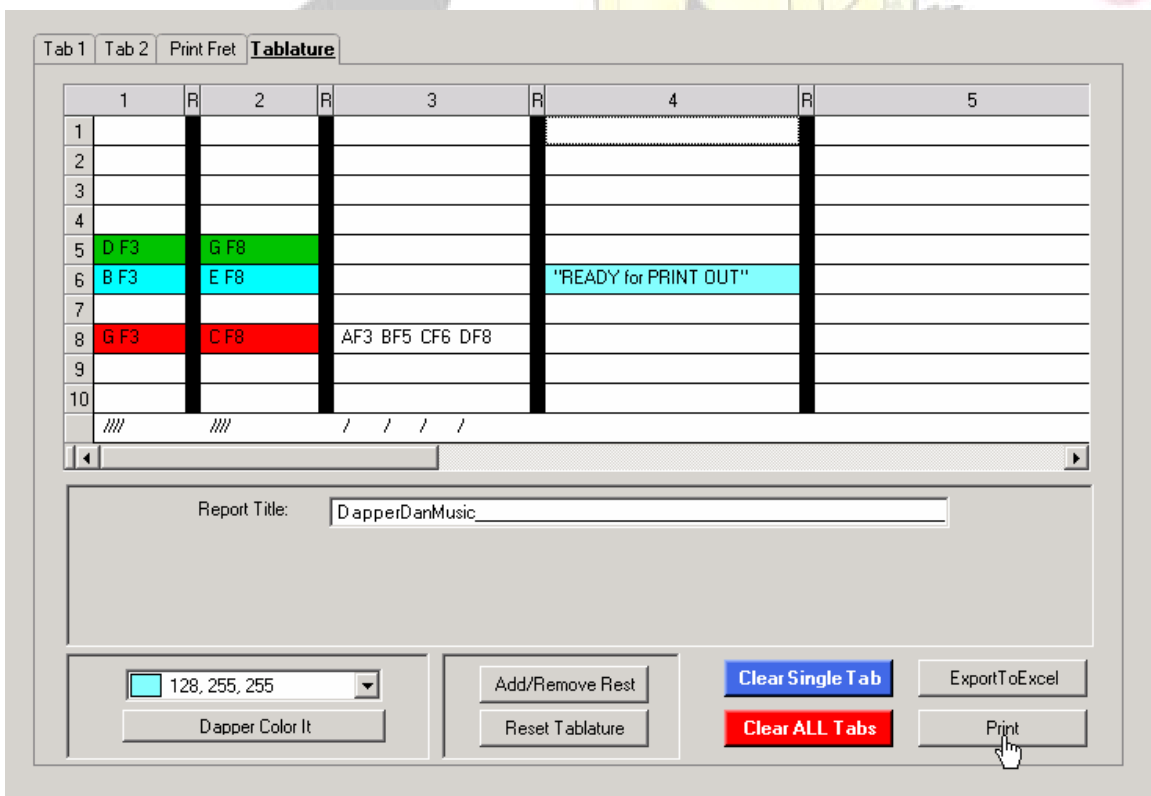
ExportToExcel
Print



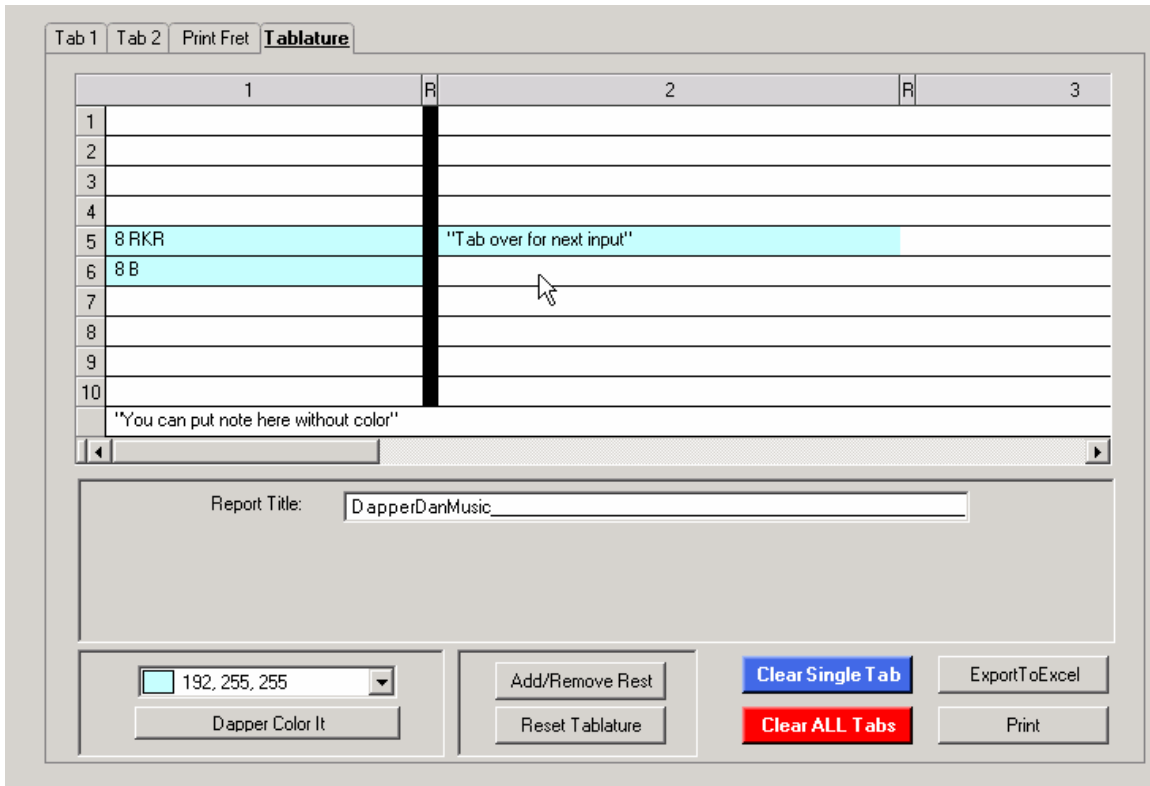
The Clear Single Tab will remove what you highlight with CTRL and click. The Clear All Tabs will clear the screen completely.



The Reset Tablature will clear the screen plus realign the rest bars like this.



Ready for print out:



You may also write tab by hand if you like.

SPECIAL NOTES: Software functions and miscellaneous items:

The “Help Me” search function is for chord searches only. It will default to chord search when Help Me is clicked.

- 1) Please note that the X5 lever (horizontal lever) is set up to be on the left knee, if yours is different then you can not search for chords using your X lever so please zero the pull setting to avoid mistakes in the chord search.
- 1b) Also set to zero any leavers and/or pedals that you do not have on your guitar.
- 2) **“HELP ME”** only works with chord search, it works with or without octave.
- 3) On the Tab1 page you can hide notes by right clicking on them one at a time.
- 4) Clear Mark removes the highlight function.
- 5) I strongly recommend you use the Boss TU-15 chromatic tuner with octaves. Put it inline and leave it on all the time so you can monitor your notes and octaves.
- 6) If you do a chord search and do not see notes you know, check to make sure octaves is not checked or that the octave you set to search for is correct and that you have the correct string and pull selected in the configuration page.

7) “Hint” you can learn where all the octaves are by turning on octaves and looking at the Tab2 page. The Tab2 page will have the complete fret board with octaves listed.

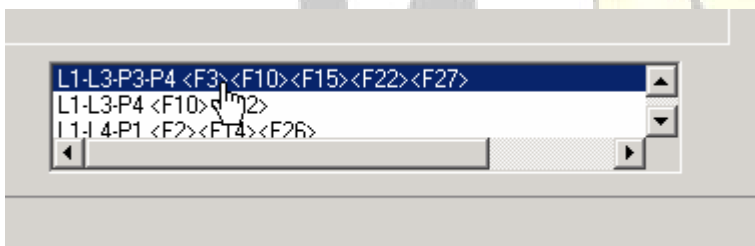
8) **After making your note selections you have to click show me to see the results.**

9) You can set the open string note to “HIDE” in the configuration page to remove complete string rows, this is helpful when working with specific string groups. This function applies to both Tab1 and Tab2 page.

10) **Help me search results** that show multiple chord results for pedal combinations.

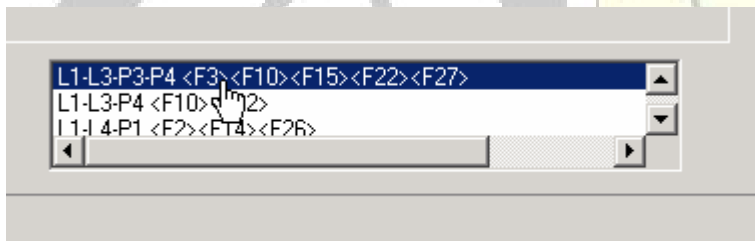
Note: That the pedal group effects chord shapes on the entire fret board and may not effect each separate chord group in the same way. It is important to understand that when using this software it is saying press these pedals and you can play all these chords here, it is not saying you must press all the pedals for each and every chord group displayed.

“Help me” functions to help you locate chord shapes and chord inversions. As a result if more than one of the same note is found at the fret you have to help sort things out a little and chose which one you like, as there are thousands of combinations on the Pedal Steel Guitar and if each chord shape was listed for each pedal combination one at a time it would take hours to go down the entire list. “The human brain can do sort functions in a fraction of a second that would take many hours to program a computer to do so you need to help a little with the sorting out note things.

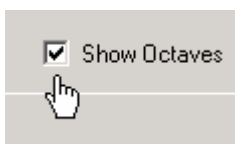


11) The help me search is read as L=Lever P=Pedal and <F8> = Fret 8

Function Guide :



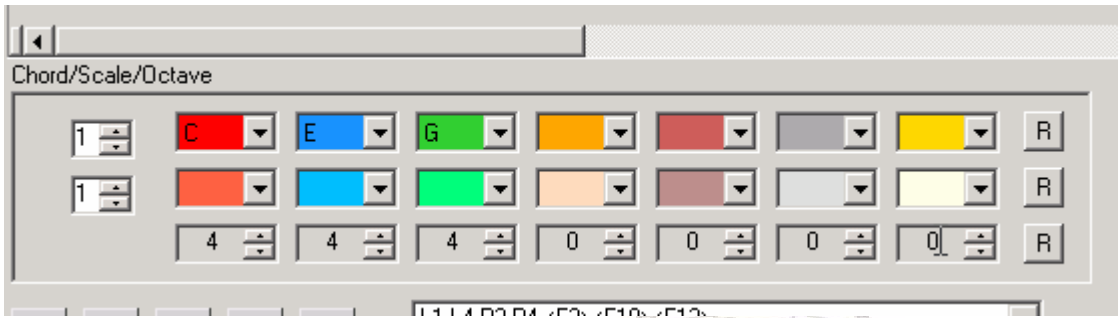
Help me search results :



Octave off/on :

Pedal Steel

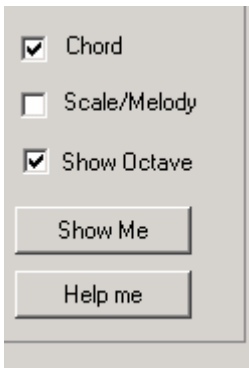
COPYRIGHT © 2004



Remove scale/harmony notes : **“The R for remove”**



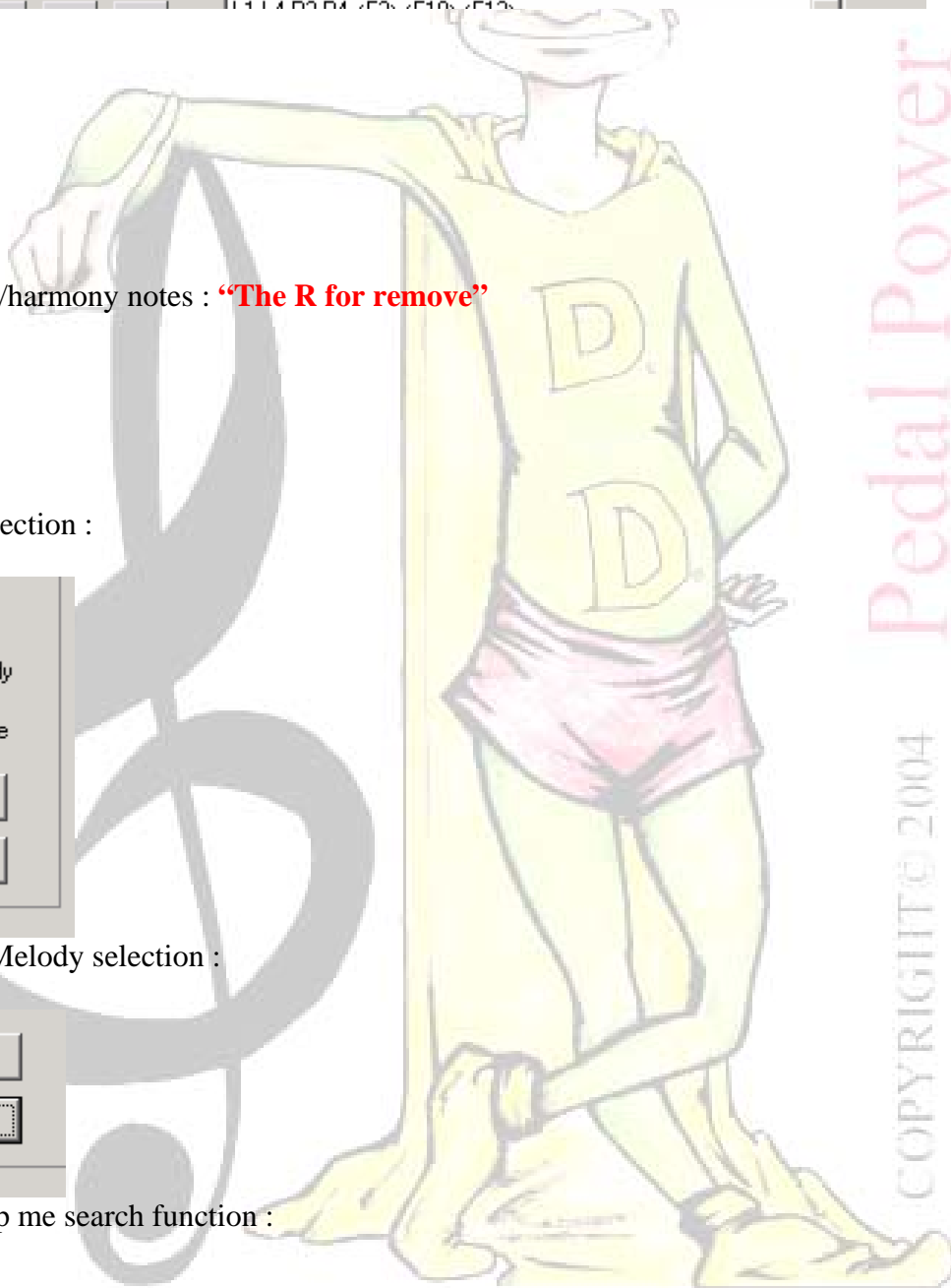
String row selection :

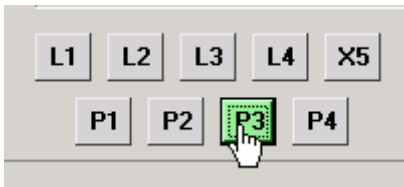


Chord Scale/Melody selection :



Show me Help me search function :





Pedal and lever activators : The pedal and levers can be applied on Tab1 and Tab2 pages, with a simple click to see where all the notes line up for a given fret or on a given string.

Report Title:

Display Frets: Frets 0-12 Print Tab2
 Frets 12-27
 All Frets

Print export commands and title bar:

Report Title:

Title bar:

Print Tab2

Print Tab2 command:

Display Frets: Frets 0-12
 Frets 12-27
 All Frets

Frets to print :

Please use CTRL and ESC Keys for highlighting and clearing the highlighting areas.

Notes and octave for the 10 string E9th below;

- 1 F# 4
- 2 D# 4
- 3 G# 4
- 4 E 4
- 5 B 3
- 6 G# 3
- 7 F# 3
- 8 E 3
- 9 D 3
- 10 B 2

Note that the octave change is between the notes B and C.

Chord Chart: (This is just a start, you can add to this list as you wish)

CHORD	NOTES
MAJOR	ROOT 3rd 5th
MINOR	ROOT b3rd 5th
DIMINISHED	ROOT b3rd b5th b7th
AUGMENTED	ROOT 3rd #5th
SEVENTH (dom)	ROOT 3rd 5th b7th

MINOR SEVENTH	ROOT b3rd 5th 7th
MAJOR SEVENTH	ROOT 3rd 5th 7th
7th augmented 5 th	ROOT 3rd #5th b7th
7th flat 5th	ROOT 3rd b5th b7th
MAJOR 7 flat 3 rd	ROOT b3rd 5th 7th
MAJOR 7 flat 5 th	ROOT 3rd b5th 7th
7th suspended 4 th	ROOT 4th 5th b7th
SIXTH	ROOT 3rd 5th 6th
MINOR SIXTH	ROOT b3rd 5th 6th
NINTH	ROOT 3rd 5th b7th 9th
MINOR NINTH	ROOT b3rd 5th b7th 9th
MAJOR NINTH	ROOT 3rd 5th 7th 9th
9th augmented 5 th	ROOT 3rd #5th b7th 9th
9th flat 5 th	ROOT 3rd b5th b7th 9th
7th flat 9 th	ROOT 3rd 5th b7th b9th
7th augmented 9 th	ROOT 3rd 5th b7th #9th
6th add 9 th	ROOT 3rd 5th 6th 9th
ELEVENTH	ROOT 3rd 5th b7th 9th 11th
augmented 11 th	ROOT 3rd 5th b7th 9th #11th
THIRTEENTH	ROOT 3rd 5th b7th 9th 11th 13th
13th flat 9 th	ROOT 3rd 5th b7th b9th 11th 13th
13th flat 9th/5 th	ROOT 3rd b5th b7th b9th 11th 13th

Scale intervals :

1	2	3	4	5	6	7					
C	C#	D	D#	E	F	F#	G	G#	A	A#	B
D	D#	E	F	F#	G	G#	A	A#	B	C	C#
E	F	F#	G	G#	A	A#	B	C	C#	D	D#
F	F#	G	G#	A	A#	B	C	C#	D	D#	E
G	G#	A	A#	B	C	C#	D	D#	E	F	F#
A	A#	B	C	C#	D	D#	E	F	F#	G	G#
B	C	C#	D	D#	E	F	F#	G	G#	A	A#

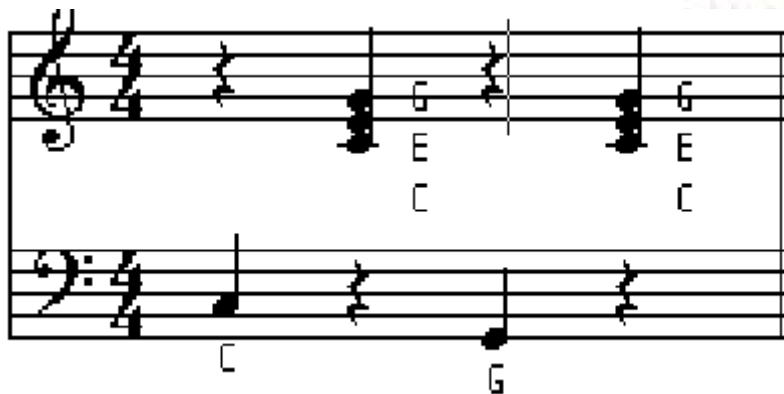
This is a low budget project brought about by the love of the pedal steel guitar and respect for those who play and those who will play them in the future.

There are literally thousands of combination for the pedals and levers and this software was a real challenge, almost as hard as playing the Pedal Steel Guitar.
Dapper Dan,

Example search : A “Quick Start” so to speak!

Pedal Power
COPYRIGHT © 2004

Note how the software is set up in left to right as bottom to top of the music cleff. C first on your left, E second and G third.



Lets set up the software and search for the C4, E4 and G4 on the treble cleff above. See results below:

- 1) On the levers pedal page set the notes to:
String 1-F# octave 4 <> String 2-D# octave 4 <> String 3-G# octave 4 <> String 4-E octave 4 <> String 5-B octave 3 <> String 6-G# octave 3 <> String 7-F# octave 3 <> String 8-E octave 3 <> String 9-D octave 3 and String 10-B octave 2.
- 2) Lets set up the standard AB pedal pulls for this I will be using pedal 2 and 3 as that is my set up, my 1 pedal lowers string 5 and 10 so my A, B, is pedal 2 and 3 for the standard Emmons set up.
- 3) Set pedal 2 buy clicking on the round box next to the pedal 2 and at string 5 and 10 using the up/down arrow set this to a 2 (not -2) as 2 is for up two fret pull and -2 is for down 2 fret pull. (Do this type setup for all your levers and pedals).
- 3) Set pedal 3 for string 3, up 1 and string 6, up 1. (Click save to save your input)
- 4) Check the octave box as we want to search for a specific chord inversion.
- 5) Click save and then click OK.
- 6) Click the Fret tab.
- 7) Click the Chord/Scale tab then click Show Octave as we will be working with octaves.
- 7a) With the up/down arrows under the Octave set the first three boxes to 4.
- 8) With the up/down arrows under the note color boxes set the first three from your left to read octave 4.
- 9) Using the drop down box in the first box set that to a C.
- 10) Using the drop down box in the second box set that to a E.
- 11) Using the drop down box in the third box set that to a G.
- 12) Check the chord box as we are looking for a chord.
- 13) Now click "Show Me" for display.
- 14) What you are looking at is a C chord with an octave of 4 on each note at fret 1 and fret 8.
- 15) For more to chose from lets do a help me, so click on "Help Me"
- 16) Click Ok when the search is complete.
- 17) You will now see a list created in the center window.

18) The row that reads P2 P3 <F3><F10> which stands for Pedal 2 and Pedal 3 and Fret 3 and Fret 10 .

18) The software is saying if you apply the above Pedals all at one time you can find the C chord we looked for at Fret's 3 on strings 6, 5 and on string 10, 6, 5 at fret 10.

19) Now lets do your part of the sorting.

20) Lets see if you need each pedal and or lever for each chord position.

21) By clicking on each pedal one at a time you will see that pedal 2 is needed for the chord at fret 3 but not 10 and pedal 3 is needed for fret 3 and 10. This tells you that you can put both pedals down and play either chord position or only use the pedal that is required for each.

22) Turning both pedals off gets you back to the open position.

23) Please note that even if you do not turn off pedals and levers one at a time each and ever combination is in the drop down list at some point in the list you will find it, the above is just a short cut so to speak.

24) Put in the next chord your looking for and click show me and then help me, that's it that's all there is to it.

25) See examples below of the above search.

Fret Board Configuration

Tab 1 Tab 2 Print Fret Tablature

	Open	1	2	3	4	5	6	7	8	9	10	11	1
1		G 4											
2		E 4											
3													
4													
5		C 4							G 4				
6									E 4				
7													
8									C 4				
9													
10													

Chord/Scale/Octave

1 C E G [dropdowns] R

1 [dropdowns] R

4 4 4 0 0 0 0 R

L1 L2 L3 L4 X5

P1 P2 P3 P4

L1-L4-P3-P4 <F3><F10><F13>
 L1-P2-P3 <F3><F10>
 L1-P3-P4 <F3><F10>
 L1-X5-L4 <F1><F13>

Chord
 Scale/Melody
 Show Octave

Show Me
 Help me

Fret Board Configuration

Tab 1 Tab 2 Print Fret Tablature

	Open	1	2	3	4	5	6	7	8	9	10	11	1
1													
2													
3													
4				G 4									
5				E 4									
6				C 4							G 4		
7											E 4		
8													
9											C 4		
10													

Chord/Scale/Octave

1 C E G [] [] [] R

1 [] [] [] [] [] [] R

4 4 4 0 0 0 0 R

L1 L2 L3 L4 X5

P1 P2 P3 P4

L4-P3 <F1><F10><F13>
 P1 <F10>
 P2-P3 <F3><F10>
 P3 <F1><F10>

Chord
 Scale/Melody
 Show Octave

Show Me
 Help me

With pedals 2 and 3 applied.

Fret Board Configuration

Tab 1 Tab 2 Print Fret Tablature

	Open	1	2	3	4	5	6	7	8	9	10	11	1
1		G 4											
2		E 4											
3													
4													
5		C 4											
6											G 4		
7											E 4		
8													
9											C 4		
10													

Chord/Scale/Octave

1 C E G [] [] [] R

1 [] [] [] [] [] [] R

4 4 4 0 0 0 0 R

L1 L2 L3 L4 X5

P1 P2 P3 P4

L4-P3 <F1><F10><F13>
 P1 <F10>
 P2-P3 <F3><F10>
 P3 <F1><F10>

Chord
 Scale/Melody
 Show Octave

Show Me
 Help me

Note how the open position is displayed when not effected by a pull of pedal 3 and also note that pedal 3 must be applied for fret 3 and 10.

What is being pointed out here is you can play the C note at fret 10 with just the Pedal 3 but you need both pedal 2 and 3 for the C note at fret 3 or you can just put them both down and play either position.

A special note to say I do not play the C6th tuning, I am a SD10 E9th picker and will try to answer any question you have about the software in regards to the E9th tuning.

The End

